

Recombinant Human CDR2 Protein, GST-Tagged

Cat. No. CDR2-1072H Lot. No. (See product label)

SPECIFICATION

Product Overview	Human CDR2 full-length ORF (AAH17503, 1 a.a. - 454 a.a.) recombinant protein with GST-tag at N-terminal.
Species	Human
Source	Wheat Germ
Description	CDR2 (Cerebellar Degeneration Related Protein 2) is a Protein Coding gene. Diseases associated with CDR2 include Cerebellar Degeneration and Paraneoplastic Cerebellar Degeneration. An important paralog of this gene is CDR2L.
Molecular Mass	75.68 kDa
AA Sequence	<p>MLAENLVEEFEMKEDEPWYDHQDLQQLLAAELGKTLDDRNTLEDVSVQQMYTT NQEQLQEIEYLTKQVELLRQMNEQHAKVYEQLDVTARELEETNQLVADSKASQQKI LSLTETIECLQTNIDHLQSQVEELKSSGQGRRSPGKCDQEKPAFACLKELYDLRQ HFVYDHFVFAEKITSLQGQSPDEEENEHLKKTVTMLQAQLSLERQKRVTMEEYGL VLKENSELEQQLGATGAYRARALELEAEVAEMRQMLQSEHPFVNGVEKLVPSLYV PFKEPSQSLLEEMFLTVPESHRKLKRSSSETILSSLAGSDIVKGHEETCIRRAKAVK QRGISLLHEVDTQYSALKVKYEELLKCKQEEQDSLHKAVQTSRAAAKDLTGVNAQ SEPVASGWELASVNPEPVSSPTTPPEYKALFKEIFSCIKKTKQEIDEQRRTKYRSLSSH S</p>
Applications	Enzyme-linked Immunoabsorbent Assay Western Blot (Recombinant protein)

 Tel: 1-631-559-9269 1-516-512-3133

 Email: info@creative-biomart.com  Fax: 1-631-938-8127

 45-1 Ramsey Road, Shirley, NY 11967, USA

Antibody Production
Protein Array

Storage Store at -80 centigrade. Aliquot to avoid repeated freezing and thawing.

Storage Buffer 50 mM Tris-HCl, 10 mM reduced Glutathione, pH=8.0 in the elution buffer.

GENE INFORMATION

Gene Name [CDR2 cerebellar degeneration-related protein 2, 62kDa \[Homo sapiens \]](#)

Official Symbol [CDR2](#)

Synonyms CDR2; cerebellar degeneration-related protein 2, 62kDa; cerebellar degeneration related protein (62kD); cerebellar degeneration-related protein 2; CDR62; Yo; Yo paraneoplastic antigen; major Yo paraneoplastic antigen; paraneoplastic cerebellar degeneration-associated antigen;

Gene ID [1039](#)

mRNA Refseq [NM_001802](#)

Protein Refseq [NP_001793](#)

MIM [117340](#)

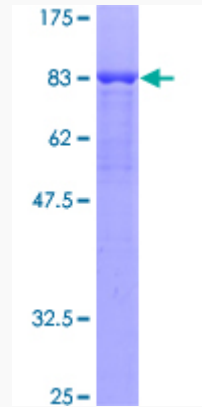
UniProt ID [Q01850](#)

 Tel: 1-631-559-9269 1-516-512-3133

 Email: info@creative-biomart.com  Fax: 1-631-938-8127

 45-1 Ramsey Road, Shirley, NY 11967, USA

**Quality Control
Testing**



12.5% SDS-PAGE Stained with Coomassie Blue.

 Tel: 1-631-559-9269 1-516-512-3133

 Email: info@creative-biomart.com  Fax: 1-631-938-8127

 45-1 Ramsey Road, Shirley, NY 11967, USA