

Recombinant Human CDR2L protein, His-tagged

Cat. No. CDR2L-4645H Lot. No. (See product label)

SPECIFICATION

Product Overview	Recombinant Human CDR2L protein(Q86X02)(1-465 aa), fused with C-terminal His tag, was expressed in E.coli.
Species	Human
Source	E.coli
ProteinLength	1-465 aa
Form	For liquid formulations, the standard storage buffer consists of a Tris or PBS based solution supplemented with 5-50% glycerol. When provided as lyophilized powder, the product undergoes freeze-drying from a Tris- or PBS-based formulation containing 6% trehalose, adjusted to pH 8.0 prior to the lyophilization process.
Molecular Mass	60.0 kDa
AASequence	<p>MRRAAGMEDFSAEEEEESWYDQQDLEQDLHLAAELGKTLERNKELEGLSQQMYST NEEQVQEIEYLTKQLDTRLHVNEQHAKVYEQLDLTARDLELTNRHLVLESKAAQQKI HGLTETIERLQAQVEELQAQVEQLRGLRVLREKRERRRTIHTFPCLKELCTSPR CKDAFRLHSSSLELGPRPLEQENERLQTLVGALRSQVSQERQRKERAEREYTAVLQ EYSELERQLCEMEACRLRVQELEAEELLELQMQKAKTYLLGPDHDLAEALLAPLTQA PEADDPQPGRGDDLGAQDGVSSPAASPGHVVRKSCSDTALNAIVAKDPASRHAGN LTLHANSVRKRGMSILREVDEQYHALLEKYEELLSKCRQHAGVRHAGVQTSRPI RDSSWRDLRGGEEGQGEVKAGEKSLSQHVEAVDKRLEQSQPEYKALFKEIFSRIQK TKADINATKVKTHSSK</p>

 Tel: 1-631-559-9269 1-516-512-3133

 Email: info@creative-biomart.com  Fax: 1-631-938-8127

 45-1 Ramsey Road, Shirley, NY 11967, USA

Purity	Greater than 85% as determined by SDS-PAGE.
Storage	Store at -20°C/-80°C upon receipt, aliquoting is necessary for mutiple use. Avoid repeated freeze-thaw cycles.
Reconstitution	Please reconstitute protein indeionized sterile water to a concentration of 0.1-1.0 mg/mL. Aliquot for long-term storage at -80°C.
MIM-Weblink	

GENE INFORMATION

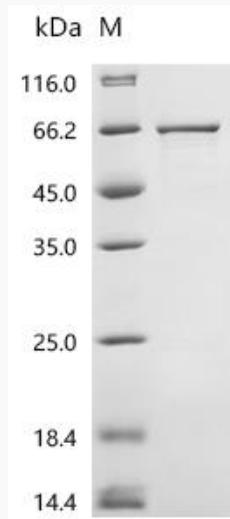
Gene Name	CDR2L cerebellar degeneration-related protein 2-like [Homo sapiens]
Official Symbol	CDR2L
Synonyms	cdr2l; CDR2L_HUMAN; Cerebellar degeneration-related protein 2-like; Gm21; Paraneoplastic 62 kDa antigen; paraneoplastic antigen; HUMPPA
Gene ID	30850
mRNA Refseq	NM_014603.2
Protein Refseq	NP_055418.2
UniProt ID	Q86X02

 Tel: 1-631-559-9269 1-516-512-3133

 Email: info@creative-biomart.com  Fax: 1-631-938-8127

 45-1 Ramsey Road, Shirley, NY 11967, USA

SDS-PAGE



 Tel: 1-631-559-9269 1-516-512-3133

 Email: info@creative-biomart.com  Fax: 1-631-938-8127

 45-1 Ramsey Road, Shirley, NY 11967, USA