

Recombinant Human CDSN Protein, GST-Tagged

Cat. No. CDSN-1079H Lot. No. (See product label)

SPECIFICATION

Product Overview	Human CDSN partial ORF (NP_001255, 306 a.a. - 355 a.a.) recombinant protein with GST-tag at N-terminal.
Species	Human
Source	Wheat Germ
Description	This gene encodes a protein found in corneodesmosomes, which localize to human epidermis and other cornified squamous epithelia. The encoded protein undergoes a series of cleavages during corneocyte maturation. This gene is highly polymorphic in human populations, and variation has been associated with skin diseases such as psoriasis, hypotrichosis and peeling skin syndrome. The gene is located in the major histocompatibility complex (MHC) class I region on chromosome 6. [provided by RefSeq, Dec 2014]
Molecular Mass	31.24 kDa
AA Sequence	YLVPGMTYSKGGKIYPVGYFTKENPVKGGSPGVPSFAAGPPISEGKYFSSNP
Applications	Enzyme-linked Immunoabsorbent Assay Western Blot (Recombinant protein) Antibody Production Protein Array
Storage	Store at -80 centigrade. Aliquot to avoid repeated freezing and thawing.

 Tel: 1-631-559-9269 1-516-512-3133

 Email: info@creative-biomart.com  Fax: 1-631-938-8127

 45-1 Ramsey Road, Shirley, NY 11967, USA

Storage Buffer 50 mM Tris-HCl, 10 mM reduced Glutathione, pH=8.0 in the elution buffer.

GENE INFORMATION

Gene Name CDSN corneodesmosin [Homo sapiens]

Official Symbol CDSN

Synonyms CDSN; corneodesmosin; D6S586E; differentiated keratinocyte S protein; S; PSS; HTSS; HTSS1;

Gene ID 1041

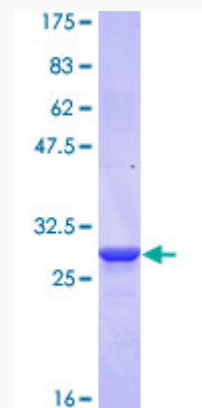
mRNA Refseq NM_001264

Protein Refseq NP_001255

MIM 602593

UniProt ID Q15517

Quality Control Testing



Tel: 1-631-559-9269 1-516-512-3133

Email: info@creative-biomart.com Fax: 1-631-938-8127

45-1 Ramsey Road, Shirley, NY 11967, USA



12.5% SDS-PAGE Stained with Coomassie Blue.

 Tel: 1-631-559-9269 1-516-512-3133

 Email: info@creative-biomart.com  Fax: 1-631-938-8127

 45-1 Ramsey Road, Shirley, NY 11967, USA