

## Recombinant Human CEACAM1 Protein, GST-Tagged

Cat. No. CEACAM1-1091H Lot. No. (See product label)

### SPECIFICATION

**Product Overview** Human CEACAM1 full-length ORF (AAH14473.1, 1 a.a. - 468 a.a.) recombinant protein with GST-tag at N-terminal.

**Species** Human

**Source** Wheat Germ

**Description** This gene encodes a member of the carcinoembryonic antigen (CEA) gene family, which belongs to the immunoglobulin superfamily. Two subgroups of the CEA family, the CEA cell adhesion molecules and the pregnancy-specific glycoproteins, are located within a 1.2 Mb cluster on the long arm of chromosome 19. Eleven pseudogenes of the CEA cell adhesion molecule subgroup are also found in the cluster. The encoded protein was originally described in bile ducts of liver as biliary glycoprotein. Subsequently, it was found to be a cell-cell adhesion molecule detected on leukocytes, epithelia, and endothelia. The encoded protein mediates cell adhesion via homophilic as well as heterophilic binding to other proteins of the subgroup. Multiple cellular activities have been attributed to the encoded protein, including roles in the differentiation and arrangement of tissue three-dimensional structure, angiogenesis, apoptosis, tumor suppression, metastasis, and the modulation of innate and adaptive immune responses. Multiple transcript variants encoding different isoforms have been reported, but the full-length nature of all variants has not been defined. [provided by RefSeq, May 2010]

**Molecular Mass** 77 kDa

 Tel: 1-631-559-9269 1-516-512-3133

 Email: [info@creative-biomart.com](mailto:info@creative-biomart.com)  Fax: 1-631-938-8127

 45-1 Ramsey Road, Shirley, NY 11967, USA



**AA Sequence**

MGHLSAPLHRVRVPWQGLLLTASLLTFWNPPTTAQLTTESMPFNVAEGKEVLLLVH  
 NLPQQLFGYSWYKGERVDGNRQIVGYAIGTQQATPGPANSGRETIYPNASLLIQNVT  
 QNDTGFYTLQVIKSDLVNEEATGQFHVYPELPKPSISSNNSNPVEDKDAVAFTCEPE  
 TQDTTYLWWINNQSLPVSPRLQLSNGNRTLTLSSVTRNDTGPYECEIQNPVSANRS  
 DPVTLNVTYGPDTPDISPSDTYYRPGANLSLSCYAASNPPAQYSWLINGTFQQSTQE  
 LFIPNITVNNSGSYTCHANNSVTGCNRTTVKTIIVTELSPVVAKPQIKASKTTVTGDKD  
 SVNLCSTNDTGISIRWFFKNQSLPSSERMKLSQGNTTLSINPVKREDAGTYWCEVF  
 NPISKNQSDPIMLNVNYPALPQENGLSPGAIAGIVIGVVALVALIAVALACFLHFGKTG  
 RTTPMTHLTR

**Applications**

Enzyme-linked Immunoabsorbent Assay  
 Western Blot (Recombinant protein)  
 Antibody Production  
 Protein Array

**Storage**

Store at -80 centigrade. Aliquot to avoid repeated freezing and thawing.

**Storage Buffer**

50 mM Tris-HCl, 10 mM reduced Glutathione, pH=8.0 in the elution buffer.

**GENE INFORMATION**

**Gene Name**

CEACAM1 carcinoembryonic antigen-related cell adhesion molecule 1 (biliary glycoprotein) [ Homo sapiens ]

**Official Symbol**

CEACAM1

**Synonyms**

CEACAM1; carcinoembryonic antigen-related cell adhesion molecule 1 (biliary glycoprotein); BGP; carcinoembryonic antigen-related cell adhesion molecule 1; BGP1; CD66a; antigen CD66; CD66a antigen; BGPI;

**Gene ID**

634

Tel: 1-631-559-9269 1-516-512-3133

Email: [info@creative-biomart.com](mailto:info@creative-biomart.com) Fax: 1-631-938-8127

45-1 Ramsey Road, Shirley, NY 11967, USA

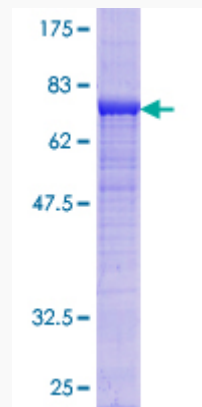
mRNA Refseq [NM\\_001024912](#)

Protein Refseq [NP\\_001020083](#)

MIM [109770](#)

UniProt ID [P13688](#)

**Quality Control  
Testing**



12.5% SDS-PAGE Stained with Coomassie Blue.

 Tel: 1-631-559-9269 1-516-512-3133

 Email: [info@creative-biomart.com](mailto:info@creative-biomart.com)  Fax: 1-631-938-8127

 45-1 Ramsey Road, Shirley, NY 11967, USA