

## Recombinant Human CEACAM1 Protein, C-His-tagged

Cat. No. CEACAM1-125H Lot. No. (See product label)

### SPECIFICATION

**Product Overview** Recombinant Human CEACAM1 Protein with C-His tag was expressed in E. coli.

**Species** Human

**Source** E.coli

#### Description

CEACAM1 (also known as C-CAM and CD66a) is a member of CEA-related cell-adhesion molecule (CEACAM) subfamily of the carcinoembryonic antigen (CEA) family. CEACAM1 is expressed by certain epithelial, endothelial, lymphoid, and myeloid cells. Human CEACAM1 has many different splice variants; the abundance of CEACAM1 and the relative ratio of the different isoforms varies markedly among cell types and may be regulated in a context-dependent fashion. The isoforms with long (L) and short (S) cytoplasmic tails have different signaling properties. Notably, L isoforms contain a functional ITIM (immunoreceptor tyrosine-based inhibitory motif) and several serine and threonine residues that could serve as potential phosphorylation targets. The extracellular domain of CEACAM1 is heavily glycosylated, making its apparent molecular weight during electrophoresis much larger than its predicted size (57.6 kDa). CEACAM1 mediates intercellular adhesion through homo- and heterophilic interaction with other members of the CEACAM family. Studies indicate that CEACAM1 plays important roles in angiogenesis, neovascularization, insulin signaling, T cell signaling, and tumorigenesis. In addition, CEACAM1 can function as a receptor for several microbial pathogens.

**Molecular Mass** ~43 kDa

 Tel: 1-631-559-9269 1-516-512-3133

 Email: [info@creative-biomart.com](mailto:info@creative-biomart.com)  Fax: 1-631-938-8127

 45-1 Ramsey Road, Shirley, NY 11967, USA

**AA Sequence**

QLTTESMPFNVAEGKEVLLL VHNLPQQLFGYSWYKGERVDGNRQIVGYAIGTQQAT  
 PGPANSGRETIYPNASLLIQNVTQNDTGFYTLQVIKSDLVNEEATGQFHVYPELPKPS  
 ISSNNSNPVEDKDAVAFTCEPETQDTTYLWWINNQSLPVS PRLQLSNGNRTL TLLSV  
 TRNDTGPYECEIQNPVSANRSDPVT LNVTYGPDTPTISP SDTYRPGANLSLSCYAA  
 SNPPAQYSWLINGTFQQSTQELFIPNITVNNSGSYTCHANNSVTGCNRTTVKTIIVTE  
 LSPVVAKPQIKASKTTVTGDKDSVNLTCSTNDTGISIRWFFKNQSLPSSERMKLSQG  
 NTTLSINPVKREDAGTYWCEVFNPI SKNQSDPIMLNVNYNALPQENGLSPG

**Purity**

Transferred into competent cells and the supernatant was purified by NI column affinity chromatography and the purity is > 85% (by SDS-PAGE).

**Notes**

For research use only, not for use in diagnostic procedure.

**Storage**

Store at 4 centigrade short term. Aliquot and store at -20 centigrade long term. Avoid freeze-thaw cycles.

**Concentration**

≥0.5 mg/mL

**Storage Buffer**

PBS, 4M Urea, pH7.4

## GENE INFORMATION

**Gene Name**

CEACAM1 carcinoembryonic antigen-related cell adhesion molecule 1 (biliary glycoprotein) [ Homo sapiens (human) ]

**Official Symbol**

CEACAM1

**Synonyms**

CEACAM1; carcinoembryonic antigen-related cell adhesion molecule 1 (biliary glycoprotein); BGP; carcinoembryonic antigen-related cell adhesion molecule 1; BGP1; CD66a; antigen CD66; CD66a antigen; BGPI;

 Tel: 1-631-559-9269 1-516-512-3133

 Email: [info@creative-biomart.com](mailto:info@creative-biomart.com)  Fax: 1-631-938-8127

 45-1 Ramsey Road, Shirley, NY 11967, USA

**Gene ID** 634

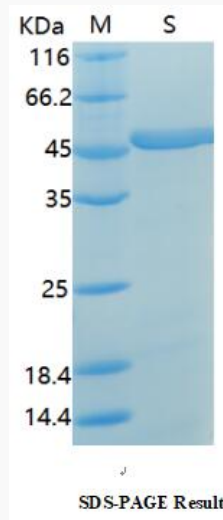
**mRNA Refseq** NM\_001024912

**Protein Refseq** NP\_001020083

**MIM** 109770

**UniProt ID** P13688

**SDS-PAGE**



 Tel: 1-631-559-9269 1-516-512-3133

 Email: [info@creative-biomart.com](mailto:info@creative-biomart.com)  Fax: 1-631-938-8127

 45-1 Ramsey Road, Shirley, NY 11967, USA