

Recombinant Human CEACAM1 protein, His-tagged

Cat. No. CEACAM1-28H Lot. No. (See product label)

SPECIFICATION

Product Overview	Recombinant human CEACAM1, fused to His-tag at C-terminus, was expressed in insect cell and purified by using conventional chromatography techniques.
Species	Human
Source	Insect Cells
Description	CEACAM1, also known as carcinoembryonic antigen-related cell adhesion molecule 1 isoform 6, is a member of the carcinoembryonic antigen (CEA) gene family which belongs to the immunoglobulin superfamily. This protein is a surface glycoprotein expressed on various blood cells, epithelial cells, and vascular cells. It performs actions in multiple cellular processes including tissue differentiation, angiogenesis, apoptosis, metastasis, as well as the modulation of innate and adaptive immune responses.
Form	Liquid. In Phosphate Buffered Saline (pH 7.4) containing 10% glycerol.
Molecular Mass	44.6kDa (405aa) 40-70KDa (SDS-PAGE under reducing conditions.)
AA Sequence	ADPEFQLTTE SMPFNVAEGK EVLLL VHNLP QQLFGYSWYK GERVDGNRQI VGYAIGTQQA TPGPANS GRE TIYPNASLLI QNVTQNDTGFYTLQVIKSDL VNEEATGQFH VYPELPKPSI SSNNSNPVED KDAVAFTCEP ETQDTTYLWW INNQSLPVSP RLQLSNGNRT LTLLSVTRNDTGPYECEIQN PVSANRSDPV TLNVTYGPDT PTISPSDTYY RPGANLSLSC YAASNPPAQY SWLINGTFQQ

 Tel: 1-631-559-9269 1-516-512-3133

 Email: info@creative-biomart.com  Fax: 1-631-938-8127

 45-1 Ramsey Road, Shirley, NY 11967, USA

STQELFIPNI TVNNSGSYTCHANN SVTGCN RTTVKTIIVT ELSPVVAKPQ
 IKASKTTVTG DKDSVNLTCSTNDTGISIRW FFKNQSLPSS ERMKLSQGNT
 TLSINPVKRE
 DAGTYWCEVF NPISKNQSDP IMLNVNYNAL PQENGLSPGH HHHHH

Endotoxin < 1.0 EU per 1 microgram of protein (determined by LAL method)

Purity > 90% by SDS - PAGE

Storage Can be stored at +4centigrade short term (1-2 weeks). For long term storage, aliquot and store at -20centigrade or -70centigrade. Avoid repeated freezing and thawing cycles.

Concentration 0.25mg/ml (determined by Absorbance at 280nm)

GENE INFORMATION

Gene Name CEACAM1 carcinoembryonic antigen-related cell adhesion molecule 1 (biliary glycoprotein) [Homo sapiens]

Official Symbol CEACAM1

Synonyms CEACAM1; BGP; carcinoembryonic antigen-related cell adhesion molecule 1; BGP1; CD66a; antigen CD66; CD66a antigen; BGPI;

Gene ID 634

mRNA Refseq NM_001024912

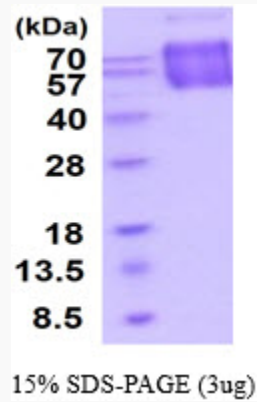
Protein Refseq NP_001020083

 Tel: 1-631-559-9269 1-516-512-3133

 Email: info@creative-biomart.com  Fax: 1-631-938-8127

 45-1 Ramsey Road, Shirley, NY 11967, USA

MIM	109770
UniProt ID	P13688
Chromosome Location	19q13.2
Pathway	EGFR1 Signaling Pathway, organism-specific biosystem;
Function	molecular_function; protein binding;



 Tel: 1-631-559-9269 1-516-512-3133

 Email: info@creative-biomart.com  Fax: 1-631-938-8127

 45-1 Ramsey Road, Shirley, NY 11967, USA