

Recombinant Human CEACAM16 Protein, MYC/DDK-tagged, C13 and N15-labeled

Cat. No. CEACAM16-109H Lot. No. (See product label)

SPECIFICATION

Product Overview

CEACAM16 MS Standard C13 and N15-labeled recombinant protein (NP_001034302) with a C-terminal MYC/DDK tag, was expressed in HEK293 cells.

Species

Human

Source

HEK293

Description

The protein encoded by this gene is a secreted glycoprotein that in mouse interacts with tectorial membrane proteins in the inner ear. The encoded adhesion protein is found in cochlear outer hair cells and appears to be important for proper hearing over an extended frequency range. Defects in this gene likely are a cause of non-syndromic autosomal dominant hearing loss.

Molecular Mass

52.68 kDa

AA Sequence

MSDLLSIYSAPVVVSTVLHMLQIRKRLRGRVHKLPRVLEVGNSGTMSRAYTFFFLRW
SFMALTGYSWLLSATFLNVGAEISITLEPAQPSEGDNVTLVVHGLSGELLAYSWYA
GPTLSVSYLVASYIVSTGDETPGPAHTGREAVRPDGSLDIQGILPRHSGTYILQTFNR
QLQTEVG YGHVQVHEILAQPTVLANSTALVERRDTLRLMCSSPSPTAEVRWFFNGG
ALPVALRLGLSPDGRVRLARHGIRREEAGAYQCEVWNPVSVSRSEPINLTVYFGER
VAILQDSTTRTGCTIKVDFNTSLTLWCVSRSCPEPEYVWTFNGQALKNGQDHLNISS
MTAAQEGTYTCAKNTKTLSSGSASVVVKLSAAAVATMIVPVPTKPTEGQDVTTLTVQ
GYPKDLLVYAWYRGPASEPNRLLSQLPSGTWIAGPAHTGREVGFPNCSLLVQKLNL

Tel: 1-631-559-9269 1-516-512-3133

Email: info@creative-biomart.com Fax: 1-631-938-8127

45-1 Ramsey Road, Shirley, NY 11967, USA

TDTGRYTLKTVTVQGKTETLEVELQVAPLGTTRTRPLEQKLISEEDLAANDILDYKDDD
DKV

Purity > 80% as determined by SDS-PAGE and Coomassie blue staining

Stability Stable for 3 months from receipt of products under proper storage and handling conditions.

Storage Store at -80 centigrade. Avoid repeated freeze-thaw cycles.

Concentration 50 µg/mL as determined by BCA

Storage Buffer 100 mM glycine, 25 mM Tris-HCl, pH 7.3.

GENE INFORMATION

Gene Name CEACAM16 CEA cell adhesion molecule 16, tectorial membrane component [Homo sapiens (human)]

Official Symbol CEACAM16

Synonyms CEACAM16; CEA cell adhesion molecule 16, tectorial membrane component; CEAL2; DFNA4B; DFNB113; carcinoembryonic antigen-related cell adhesion molecule 16; carcinoembryonic antigen like-2 protein; carcinoembryonic antigen related cell adhesion molecule 16

Gene ID 388551

mRNA Refseq NM_001039213

Protein Refseq NP_001034302

 Tel: 1-631-559-9269 1-516-512-3133

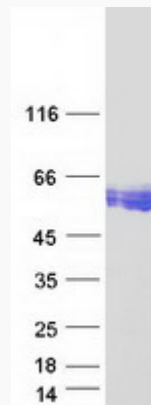
 Email: info@creative-biomart.com  Fax: 1-631-938-8127

 45-1 Ramsey Road, Shirley, NY 11967, USA

MIM 614591

UniProt ID Q2WEN9

SDS-PAGE



 Tel: 1-631-559-9269 1-516-512-3133

 Email: info@creative-biomart.com  Fax: 1-631-938-8127

 45-1 Ramsey Road, Shirley, NY 11967, USA