

Recombinant Human CEACAM20 Protein, Myc/DDK-tagged, C13 and N15-labeled

Cat. No. CEACAM20-1990H Lot. No. (See product label)

SPECIFICATION

Product Overview

CEACAM20 MS Standard C13 and N15-labeled recombinant protein (NP_001096067) with a C-terminal MYC/DDK tag, was expressed in HEK293 cells.

Species

Human

Source

HEK293

Description

Together with the tyrosine-protein kinase SYK, enhances production of the cytokine CXCL8/IL-8 via the NFκB pathway and may thus have a role in the intestinal immune response.

Molecular Mass

65.6 kDa

AA Sequence

MGPADSWGHHWGMILLSASLCTVWSPAAAQLTLNANPLDATQSEDVVLVPVFGTP
 RTPQIHGRSRELAKPSIAVSPGTAIEQKDMVTFYCTTKDVNITIHWVSNL SVVFHER
 MQLSKDGGKILTILIVQREDSGT YQCEARDALLSQRSDPIFLDVKYGDPVEIKLESGV
 ASGEVVEVMEGSSMTFLAETKSHPPCAYTWFL LDSILSHTTRFTIHAVSREHEGLY
 RCLVSN SATHLSSLGLTKVRVLETLTMPQVVPSSLNLVENARSDLT CQTVNQSVNV
 QWFLSGQPLL PSEHLQLSADNRTLIIHGLQRNDTGPYACEVWNWGSRRARSEPLETI
 NYGPDQVHITRESASEMISTIEAELNSSLTLQCWAESKPGA EYRWTL EHGSTGEHLGE
 QLIIRALTWEHDGIYNCTASNSLTGLARSTSVLVKVVGPQSSSLSSGAIAGIVIGILAVI
 AVASELGYFLYIRNARRPSRKT TEDPSHETSQPIPK EEHPTEPSSELSPEYCNISQL
 QGRIRVELMQPPDLPEETYETKLP SASRRGNSFSPWKPPP KPLMPPLRLVSTV PKN

Tel: 1-631-559-9269 1-516-512-3133

Email: info@creative-biomart.com Fax: 1-631-938-8127

45-1 Ramsey Road, Shirley, NY 11967, USA

MESIYEELVNPEPNTYIQINPSVTRTRPLEQKLISEEDLAANDILDYKDDDDKV

Purity > 80% as determined by SDS-PAGE and Coomassie blue staining

Stability Stable for 3 months from receipt of products under proper storage and handling conditions.

Storage Store at -80 centigrade. Avoid repeated freeze-thaw cycles.

Concentration 50 µg/mL as determined by BCA

Storage Buffer 100 mM glycine, 25 mM Tris-HCl, pH 7.3.

GENE INFORMATION

Gene Name CEACAM20 carcinoembryonic antigen-related cell adhesion molecule 20 [Homo sapiens (human)]

Official Symbol CEACAM20

Synonyms CEACAM20; carcinoembryonic antigen-related cell adhesion molecule 20; UNQ9366; GPAD9366;

Gene ID 125931

mRNA Refseq NM_001102597

Protein Refseq NP_001096067

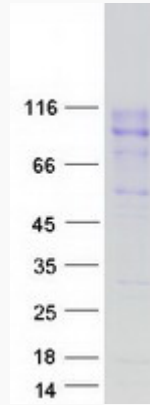
UniProt ID Q6UY09

 Tel: 1-631-559-9269 1-516-512-3133

 Email: info@creative-biomart.com  Fax: 1-631-938-8127

 45-1 Ramsey Road, Shirley, NY 11967, USA

SDS-PAGE



 Tel: 1-631-559-9269 1-516-512-3133

 Email: info@creative-biomart.com  Fax: 1-631-938-8127

 45-1 Ramsey Road, Shirley, NY 11967, USA