

Recombinant Human CEACAM21 Protein, GST-Tagged

Cat. No. CEACAM21-1094H **Lot. No.** (See product label)

SPECIFICATION

Product Overview	Human CEACAM21 full-length ORF (AAH12001.1, 1 a.a. - 191 a.a.) recombinant protein with GST-tag at N-terminal.
Species	Human
Source	Wheat Germ
Description	CEACAM21 (Carcinoembryonic Antigen Related Cell Adhesion Molecule 21) is a Protein Coding gene. An important paralog of this gene is CEACAM1.
Molecular Mass	47.9 kDa
AA Sequence	MGPPSACPHRECIPWQGLLLTASLLTFWNAPTTAWLFIASAPFEVAEGENVHLSVY LPENLYSYGWYKGKTVEPNQLIAAYVIDTHVRTPGPAYSGRETISPSGDLHFQNVTL EDTGYYNLQVTYRNSQIEQASHHLRVYGECSKFDSEISEDAAWPQDTFCWSLYPQS QWLSPPSKPAAPQSQRAPWS
Applications	Enzyme-linked Immunoabsorbent Assay Western Blot (Recombinant protein) Antibody Production Protein Array
Storage	Store at -80 centigrade. Aliquot to avoid repeated freezing and thawing.
Storage Buffer	50 mM Tris-HCl, 10 mM reduced Glutathione, pH=8.0 in the elution buffer.

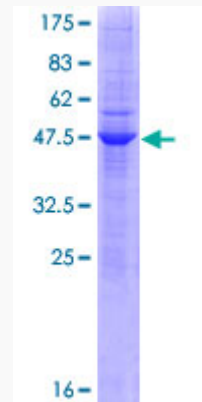
 Tel: 1-631-559-9269 1-516-512-3133

 Email: info@creative-biomart.com  Fax: 1-631-938-8127

 45-1 Ramsey Road, Shirley, NY 11967, USA

GENE INFORMATION

Gene Name	CEACAM21 carcinoembryonic antigen-related cell adhesion molecule 21 [Homo sapiens]
Official Symbol	CEACAM21
Synonyms	CEACAM21; carcinoembryonic antigen-related cell adhesion molecule 21; FLJ13540; R29124_1; CEACAM3; MGC119874;
Gene ID	90273
mRNA Refseq	NM_001098506
Protein Refseq	NP_001091976
UniProt ID	Q3KPI0

Quality Control Testing

12.5% SDS-PAGE Stained with Coomassie Blue.

 Tel: 1-631-559-9269 1-516-512-3133 Email: info@creative-biomart.com  Fax: 1-631-938-8127 45-1 Ramsey Road, Shirley, NY 11967, USA