

Recombinant Human CEACAM21 Protein (Trp35-Gly240), C-His tagged

Cat. No. CEACAM21-1535H Lot. No. (See product label)

SPECIFICATION

Product Overview	Recombinant human CEACAM21 (Trp35-Gly240) fused with the C-terminal His tag was expressed in Mammalian cells.
Species	Human
Source	Mammalian Cells
ProteinLength	Trp35-Gly240
Form	Lyophilized powder/frozen liquid
Molecular Mass	22.66 kDa
Purity	>90% as determined by SDS-PAGE.
Notes	For research use only.
Storage	Use a manual defrost freezer and avoid repeated freeze thaw cycles. Store at 2 to 8 centigrade for one week. Store at -20 to -80 centigrade for twelve months from the date of receipt.
Storage Buffer	Supplied as solution form in PBS or lyophilized from PBS.
Reconstitution	Reconstitute in sterile water for a stock solution.

 Tel: 1-631-559-9269 1-516-512-3133

 Email: info@creative-biomart.com  Fax: 1-631-938-8127

 45-1 Ramsey Road, Shirley, NY 11967, USA

Shipping

They are shipped out with dry ice/blue ice unless customers require otherwise.

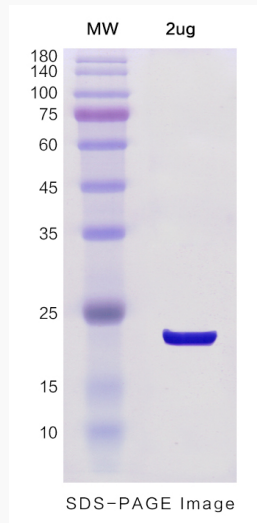
GENE INFORMATION

Gene Name	CEACAM21 carcinoembryonic antigen-related cell adhesion molecule 21 [Homo sapiens (human)]
Official Symbol	CEACAM21
Synonyms	CEACAM21; carcinoembryonic antigen-related cell adhesion molecule 21; FLJ13540; R29124_1; CEACAM3; MGC119874;
Gene ID	90273
mRNA Refseq	NM_001098506
Protein Refseq	NP_001091976
MIM	618191
UniProt ID	Q3KPI0

 Tel: 1-631-559-9269 1-516-512-3133 Email: info@creative-biomart.com  Fax: 1-631-938-8127 45-1 Ramsey Road, Shirley, NY 11967, USA



SDS-PAGE



Tel: 1-631-559-9269 1-516-512-3133

Email: info@creative-biomart.com Fax: 1-631-938-8127

45-1 Ramsey Road, Shirley, NY 11967, USA