

Recombinant Human CEACAM4 Protein (36-155 aa), His-tagged

Cat. No. CEACAM4-1356H Lot. No. (See product label)

SPECIFICATION

Product Overview	Recombinant Human CEACAM4 Protein (36-155 aa) is produced by Yeast expression system. This protein is fused with a 6xHis tag at the N-terminal. Research Area: Immunology. Protein Description: Partial.
Species	Human
Source	Yeast
ProteinLength	36-155 aa
Description	Granulocyte orphan receptor that acts as an trigger efficient phagocytosis of attached particles.
Form	Tris-based buffer,50% glycerol
Molecular Mass	14.7 kDa
AA Sequence	FTIEALPSSAAEGKDVLLACNISETIQAYYWHKGKTAEGSPLIAGYITDIQANIPGAAY SGRETVYPNGSLLFQNITLEDAGSYTLRTINASYDSDQATGQLHVHQNNVPLPVGA VAG
Purity	> 90% as determined by SDS-PAGE.
Notes	Repeated freezing and thawing is not recommended. Store working aliquots at 4

 Tel: 1-631-559-9269 1-516-512-3133

 Email: info@creative-biomart.com  Fax: 1-631-938-8127

 45-1 Ramsey Road, Shirley, NY 11967, USA

centigrade for up to one week.

Storage

The shelf life is related to many factors, storage state, buffer ingredients, storage temperature and the stability of the protein itself. Generally, the shelf life of liquid form is 6 months at -20 centigrade/-80 centigrade. The shelf life of lyophilized form is 12 months at -20 centigrade/-80 centigrade.

Concentration

A hardcopy of COA with reconstitution instruction is sent along with the products. Please refer to it for detailed information.

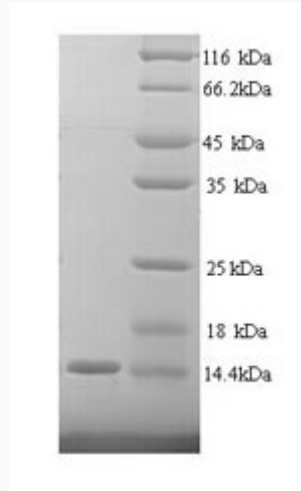
GENE INFORMATION

Gene Name	CEACAM4 carcinoembryonic antigen-related cell adhesion molecule 4 [Homo sapiens]
Official Symbol	CEACAM4
Synonyms	CEACAM4; CGM7; NCA; CGM7_HUMAN;
Gene ID	1089
mRNA Refseq	NM_001817
Protein Refseq	NP_001808
UniProt ID	O75871

 Tel: 1-631-559-9269 1-516-512-3133

 Email: info@creative-biomart.com  Fax: 1-631-938-8127

 45-1 Ramsey Road, Shirley, NY 11967, USA



(Tris-Glycine gel) Discontinuous SDS-PAGE (reduced) with 5% enrichment gel and 15% separation gel.

 Tel: 1-631-559-9269 1-516-512-3133

 Email: info@creative-biomart.com  Fax: 1-631-938-8127

 45-1 Ramsey Road, Shirley, NY 11967, USA