

Recombinant Human CEACAM5 Protein (Lys35-Ala685), C-6xHis-tagged

Cat. No. CEACAM5-015H Lot. No. (See product label)

SPECIFICATION

Product Overview	Recombinant Human CEACAM5 Protein (Lys35-Ala685) with C-6xHis tag was expressed in HEK293.
Species	Human
Source	HEK293
ProteinLength	Lys35-Ala685
Description	This gene encodes a cell surface glycoprotein that represents the founding member of the carcinoembryonic antigen (CEA) family of proteins. The encoded protein is used as a clinical biomarker for gastrointestinal cancers and may promote tumor development through its role as a cell adhesion molecule. Additionally, the encoded protein may regulate differentiation, apoptosis, and cell polarity. This gene is present in a CEA family gene cluster on chromosome 19. Alternative splicing results in multiple transcript variants.
Form	Lyophilized
Molecular Mass	72.2 kDa
Purity	> 95% as determined by SDS-PAGE and Coomassie blue staining.
Storage	Store at -80 centigrade for 12 months (Avoid repeated freezing and thawing)

 Tel: 1-631-559-9269 1-516-512-3133

 Email: info@creative-biomart.com  Fax: 1-631-938-8127

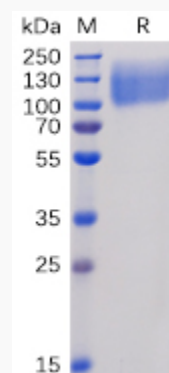
 45-1 Ramsey Road, Shirley, NY 11967, USA

Storage Buffer Lyophilized from sterile PBS, pH 7.4. Normally 5 % - 58 % trehalose is added as protectants before lyophilization.

GENE INFORMATION

Gene Name	CEACAM5 carcinoembryonic antigen-related cell adhesion molecule 5 [Homo sapiens (human)]
Official Symbol	CEACAM5
Synonyms	CEACAM5; carcinoembryonic antigen-related cell adhesion molecule 5; CEA; CD66e; meconium antigen 100; DKFZp781M2392;
Gene ID	1048
mRNA Refseq	NM_004363
Protein Refseq	NP_004354
MIM	114890
UniProt ID	P06731

SDS-PAGE



Tel: 1-631-559-9269 1-516-512-3133

Email: info@creative-biomart.com Fax: 1-631-938-8127

45-1 Ramsey Road, Shirley, NY 11967, USA