

## Recombinant Human CEACAM5 Protein, GST-Tagged

Cat. No. CEACAM5-1095H Lot. No. (See product label)

### SPECIFICATION

**Product Overview** Human CEACAM5 full-length ORF (AAH34671.1, 1 a.a. - 702 a.a.) recombinant protein with GST-tag at N-terminal.

**Species** Human

**Source** Wheat Germ

**Description** This gene encodes a cell surface glycoprotein that represents the founding member of the carcinoembryonic antigen (CEA) family of proteins. The encoded protein is used as a clinical biomarker for gastrointestinal cancers and may promote tumor development through its role as a cell adhesion molecule. Additionally, the encoded protein may regulate differentiation, apoptosis, and cell polarity. This gene is present in a CEA family gene cluster on chromosome 19. Alternative splicing results in multiple transcript variants. [provided by RefSeq, Jul 2015]

**Molecular Mass** 103.2 kDa

**AA Sequence**

```
MESPSAPPHRWCI PWQRLLLTASLLTFWNPPTAKLTIESTPFNVAEGKEVLLL VHNL
PQH LFGYSWYKGERVDG NRQIIGYVIGTQQATPGPAYSGREI IYPNASLLIQNIIQNDT
GFYTLHVIKSDLVNEEATGQFRVYPELPKPSISSNNSKPVEDKDAVAFTCEPETQDA
TYLWWVNNQSLPVS PRLQLSNGNRTLTLFNVTRNDSASYKCETQNPVSARRSDSVI
LNVLYGPDAPTISPLNTSYRSGENLNLSCHAASNPPAQYSWVNGTFQQSTQELFIP
NITVNNSGSYTCQAHNSDTGLNRRTT VTTITVYAEPPKPFITSNNSNPVEDEDAVALTC
EPEIQNTTYLWWVNNQSLPVS PRLQLSNDNRTL TLLSVTRNDVGPYECGIQNELSV
```

 Tel: 1-631-559-9269 1-516-512-3133

 Email: [info@creative-biomart.com](mailto:info@creative-biomart.com)  Fax: 1-631-938-8127

 45-1 Ramsey Road, Shirley, NY 11967, USA

DHSDPVILNVLYGPDDPTISPSYTYRPGVNLSSLSCHAASNPPAQYSWLIDGNIQQH  
 TQELFISNITEKNSGLYTCQANNSASGHSRTTVKTITVSAELPKPSSSNNKPVEDK  
 DAVAFTCEPEAQNTTYLWWVNGQSLPVSRLQLSNGNRTLTLFNVTRNDARAYVC  
 GIQNSVSANRSDPVTLDVLYGPDTPPIISPPDSSYLSGANLNLSCHSASNPSPQYSWRI  
 NGIPQQHTQVLFIAKITPNNNGTYACFVSNLATGRNNSIVKSITVSASGTSPGLSAGA  
 TVGIMIGVLVGVALI

<b>Applications</b>	Enzyme-linked Immunoabsorbent Assay Western Blot (Recombinant protein) Antibody Production Protein Array
<b>Storage</b>	Store at -80 centigrade. Aliquot to avoid repeated freezing and thawing.
<b>Storage Buffer</b>	50 mM Tris-HCl, 10 mM reduced Glutathione, pH=8.0 in the elution buffer.

## GENE INFORMATION

<b>Gene Name</b>	CEACAM5 carcinoembryonic antigen-related cell adhesion molecule 5 [ Homo sapiens ]
<b>Official Symbol</b>	CEACAM5
<b>Synonyms</b>	CEACAM5; carcinoembryonic antigen-related cell adhesion molecule 5; CEA; CD66e; meconium antigen 100; DKFZp781M2392;
<b>Gene ID</b>	1048
<b>mRNA Refseq</b>	NM_004363
<b>Protein Refseq</b>	NP_004354

 Tel: 1-631-559-9269 1-516-512-3133

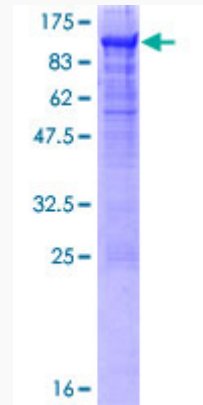
 Email: [info@creative-biomart.com](mailto:info@creative-biomart.com)  Fax: 1-631-938-8127

 45-1 Ramsey Road, Shirley, NY 11967, USA

**MIM** 114890

**UniProt ID** P06731

**Quality Control  
Testing**



12.5% SDS-PAGE Stained with Coomassie Blue.

 Tel: 1-631-559-9269 1-516-512-3133

 Email: [info@creative-biomart.com](mailto:info@creative-biomart.com)  Fax: 1-631-938-8127

 45-1 Ramsey Road, Shirley, NY 11967, USA