

Active Recombinant Human CEACAM5 protein, His-tagged

Cat. No. CEACAM5-112H Lot. No. (See product label)

SPECIFICATION

Product Overview	Active Recombinant Human CEACAM5 protein(P06731)(566~698 aa), fused with N-terminal His tag, was expressed in E.coli.
Species	Human
Source	E.coli
ProteinLength	566-698 aa
Form	Lyophilized from sterile 20mM Tris, 150mM NaCl, pH8.0, containing 1mM EDTA, 1mM DTT, 0.01% SKL, 5% Trehalose and Proclin300.
Bio-activity	<p>Carcinoembryonic antigen (CEA) which are characterized as members of the CD66 cluster of differentiation have highly related glycoproteins involved in cell adhesion. It also can be used as a tumor marker in clinical tests. CEA are glycosyl phosphatidyl inositol (GPI) cell-surface-anchored glycoproteins whose specialized sialofucosylated glycoforms serve as functional colon carcinoma L-selectin and E-selectin ligands. Besides, Galectin 4 (GAL4) has been identified as an interactor of CEA, thus a binding ELISA assay was conducted to detect the interaction of recombinant human CEA and recombinant human GLA4. Briefly, CEA were diluted serially in PBS, with 0.01% BSA (pH 7.4). Duplicate samples of 100uL were then transferred to GLA4-coated microtiter wells and incubated for 2h at 37°C. Wells were washed with PBST and incubated for 1h with anti-CEA pAb, then aspirated and washed 3 times. After incubation with HRP labelled secondary antibody, wells were aspirated and washed 3</p>

 Tel: 1-631-559-9269 1-516-512-3133

 Email: info@creative-biomart.com  Fax: 1-631-938-8127

 45-1 Ramsey Road, Shirley, NY 11967, USA

times. With the addition of substrate solution, wells were incubated 15-25 minutes at 37°C. Finally, add 50µ stop solution to the wells and read at 450nm immediately. The binding activity of CEA and GLA4 was shown, and this effect was in a dose dependent manner.

Molecular Mass 15.0kDa

Endotoxin <1.0EU per 1µg (determined by the LAL method).

Purity > 97% as determined by SDS-PAGE.

Storage Avoid repeated freeze/thaw cycles. Store at -20°C for 12 months. Aliquot and store at -80°C for 12 months.

Reconstitution Reconstitute in 20mM Tris, 150mM NaCl (pH8.0) to a concentration of 0.1-1.0 mg/mL. Do not vortex.

GENE INFORMATION

Gene Name CEACAM5 carcinoembryonic antigen-related cell adhesion molecule 5 [Homo sapiens]

Official Symbol CEACAM5

Synonyms CEACAM5; carcinoembryonic antigen-related cell adhesion molecule 5; CEA; CD66e; meconium antigen 100; DKFZp781M2392;

Gene ID 1048

mRNA Refseq NM_004363

 Tel: 1-631-559-9269 1-516-512-3133

 Email: info@creative-biomart.com  Fax: 1-631-938-8127

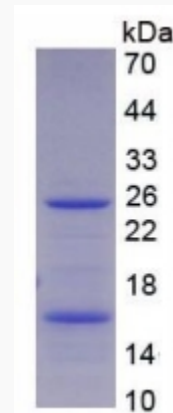
 45-1 Ramsey Road, Shirley, NY 11967, USA

Protein Refseq NP_004354

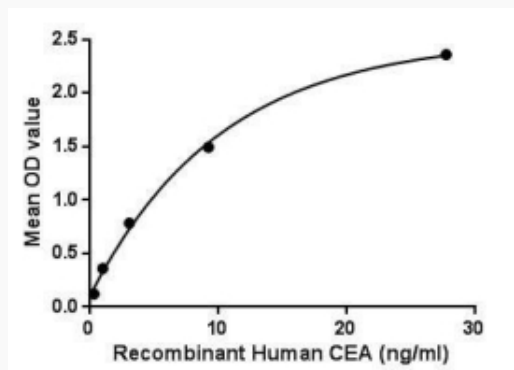
MIM 114890

UniProt ID P06731

SDS-PAGE



Activity



Tel: 1-631-559-9269 1-516-512-3133

Email: info@creative-biomart.com Fax: 1-631-938-8127

45-1 Ramsey Road, Shirley, NY 11967, USA