

Active Recombinant Human CEACAM5 protein(Lys35-Ala685), His-tagged

Cat. No. CEACAM5-3200H Lot. No. (See product label)

SPECIFICATION

Product Overview	Active Recombinant Human CEACAM5 protein(P06731-1)(Lys35-Ala685) is expressed from HEK293 with His tag at the C-terminus.
Species	Human
Source	HEK293
ProteinLength	Lys35-Ala685
Form	Lyophilized from 0.22µm filtered solution in PBS (pH 7.4). Normally 8% trehalose is added as protectant before lyophilization.
Bio-activity	Immobilized Human CEACAM-5, His Tag at 0.5µg/ml (100µl/well) on the plate. Dose response curve for Anti-CEACAM5 Antibody, hFc Tag with the EC50 of 8.3ng/ml determined by ELISA.
Molecular Mass	The protein has a predicted MW of 72.42 kDa. Due to glycosylation, the protein migrates to 100-140 kDa based on Tris-Bis PAGE result.
Endotoxin	Less than 1EU per µg by the LAL method.
Purity	> 95% as determined by Tris-Bis PAGE > 95% as determined by HPLC

 Tel: 1-631-559-9269 1-516-512-3133

 Email: info@creative-biomart.com  Fax: 1-631-938-8127

 45-1 Ramsey Road, Shirley, NY 11967, USA

Storage

-20 to -80°C for 12 months as supplied from date of receipt.
-80°C for 3-6 months after reconstitution.
2-8°C for 2-7 days after reconstitution.
Recommend to aliquot the protein into smaller quantities for optimal storage. Please minimize freeze-thaw cycles.

Reconstitution

Centrifuge the tube before opening. Reconstituting to a concentration more than 100 µg/ml is recommended. Dissolve the lyophilized protein in distilled water.

GENE INFORMATION

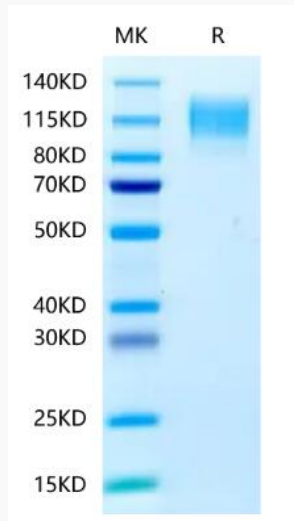
Gene Name	CEACAM5 carcinoembryonic antigen-related cell adhesion molecule 5 [Homo sapiens]
Official Symbol	CEACAM5
Synonyms	CEACAM5; carcinoembryonic antigen-related cell adhesion molecule 5; CEA; CD66e; meconium antigen 100; DKFZp781M2392;
Gene ID	1048
mRNA Refseq	NM_004363
Protein Refseq	NP_004354
MIM	114890
UniProt ID	P06731

 Tel: 1-631-559-9269 1-516-512-3133

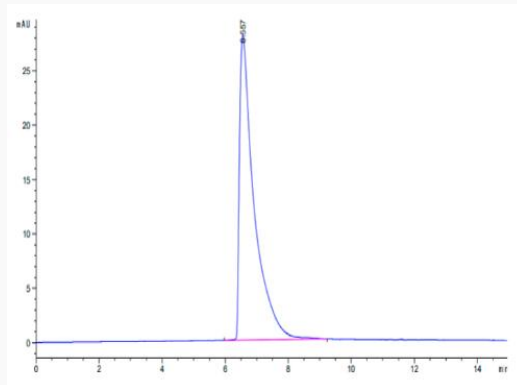
 Email: info@creative-biomart.com  Fax: 1-631-938-8127

 45-1 Ramsey Road, Shirley, NY 11967, USA

SDS-PAGE



SEC-HPLC

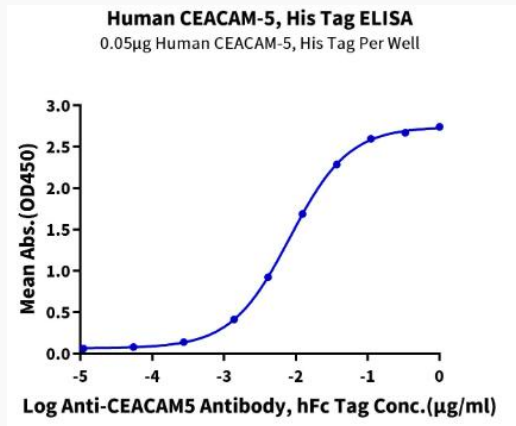


 Tel: 1-631-559-9269 1-516-512-3133

 Email: info@creative-biomart.com  Fax: 1-631-938-8127

 45-1 Ramsey Road, Shirley, NY 11967, USA

ELISA Data



 Tel: 1-631-559-9269 1-516-512-3133

 Email: info@creative-biomart.com  Fax: 1-631-938-8127

 45-1 Ramsey Road, Shirley, NY 11967, USA