

Active Recombinant Human CEACAM5 protein, His-tagged

Cat. No. CEACAM5-517H Lot. No. (See product label)

SPECIFICATION

Product Overview	Active Recombinant Human CEACAM5 protein(P06731)(35~685 aa), fused with N-terminal His tag, was expressed in HEK293.
Species	Human
Source	HEK293
ProteinLength	35-685 aa
Form	Lyophilized from sterile PBS, pH7.4, containing 0.01% SKL, 1mM DTT, 5% Trehalose and Proclin300.
Bio-activity	<p>Carcinoembryonic antigen (CEA), as one of the common tumor markers, is a human glycoprotein involved in cell adhesion and is expressed during human fetal development. Since the birth of human, CEA expression is largely inhibited, with only low levels in the plasma of healthy adults. Generally, CEA will overexpressed in many cancers, including gastric, breast, ovarian, lung, and pancreatic cancers, especially colorectal cancer. The lectin galactoside-binding soluble 3 binding protein (LGALS3BP) is also a secreted, which was first identified as cancer and metastasis associated protein. LGALS3BP has been identified as an interactor of CEA, thus a functional binding ELISA assay was conducted to detect the interaction of recombinant human CEA and recombinant human LGALS3BP. Briefly, biotin-linked CEA were diluted serially in PBS, with 0.01% BSA (pH 7.4). Duplicate samples of 100 ul were then transferred to LGALS3BP-coated microtiter wells and incubated for 1h at</p>

 Tel: 1-631-559-9269 1-516-512-3133

 Email: info@creative-biomart.com  Fax: 1-631-938-8127

 45-1 Ramsey Road, Shirley, NY 11967, USA

37°C. Wells were washed with PBST 3 times and incubation with Streptavidin-HRP for 30min, then wells were aspirated and washed 5 times. With the addition of substrate solution, wells were incubated 15-25 minutes at 37°C. Finally, add 50 µstop solution to the wells and read at 450 nm immediately. The binding activity of CEA and LGALS3BP was shown, and this effect was in a dose dependent manner.

Molecular Mass 73.0kDa

Endotoxin <1.0EU per 1µg (determined by the LAL method).

Purity > 95% as determined by SDS-PAGE.

Storage Avoid repeated freeze/thaw cycles. Store at -20°C for 12 months. Aliquot and store at -80°C for 12 months.

Reconstitution Reconstitute in 10mM PBS (pH7.4) to a concentration of 0.1-1.0 mg/mL. Do not vortex.

GENE INFORMATION

Gene Name [CEACAM5](#) carcinoembryonic antigen-related cell adhesion molecule 5 [Homo sapiens]

Official Symbol [CEACAM5](#)

Synonyms CEACAM5; carcinoembryonic antigen-related cell adhesion molecule 5; CEA; CD66e; meconium antigen 100; DKFZp781M2392;

Gene ID [1048](#)

mRNA Refseq [NM_004363](#)

 Tel: 1-631-559-9269 1-516-512-3133

 Email: info@creative-biomart.com  Fax: 1-631-938-8127

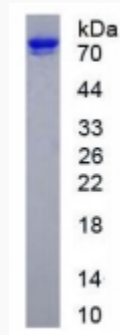
 45-1 Ramsey Road, Shirley, NY 11967, USA

Protein Refseq NP_004354

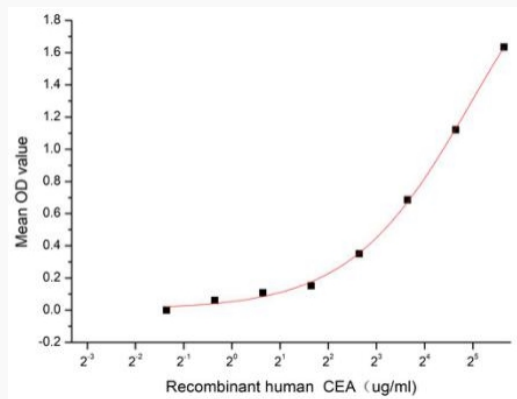
MIM 114890

UniProt ID P06731

SDS-PAGE



Activity



Tel: 1-631-559-9269 1-516-512-3133

Email: info@creative-biomart.com Fax: 1-631-938-8127

45-1 Ramsey Road, Shirley, NY 11967, USA