

Recombinant Human CEACAM5 protein, Fc-His-tagged

Cat. No. CEACAM5-665H Lot. No. (See product label)

SPECIFICATION

Product Overview	Recombinant Human CEACAM5 protein(NP_004354.2) (Met 1-Ala 685) was expressed in HEK293, fused with the C-terminal polyhistidine-tagged Fc region of human IgG1 at the C-terminus.
Species	Human
Source	HEK293
ProteinLength	1-685 aa
Form	Lyophilized from sterile PBS, pH 7.4.
Molecular Mass	The recombinant human CEACAM5/Fc is a disulfide-linked homodimer after removal of the signal peptide. The reduced monomer consists of 899 amino acids and has a predicted molecular mass of 99.4 kDa. In SDS-PAGE under reducing conditions, the apparent molecular mass of rhCEACAM5/Fc monomer is approximately 160-180 kDa due to glycosylation.
Endotoxin	< 1.0 EU per µg of the protein as determined by the LAL method.
Purity	> 95 % as determined by SDS-PAGE
Storage	Store it under sterile conditions at -20°C to -80°C upon receiving. Recommend to aliquot the protein into smaller quantities for optimal storage. Avoid repeated freeze-thaw cycles.

 Tel: 1-631-559-9269 1-516-512-3133

 Email: info@creative-biomart.com  Fax: 1-631-938-8127

 45-1 Ramsey Road, Shirley, NY 11967, USA

Reconstitution	It is recommended that sterile water be added to the vial to prepare a stock solution of 0.2 ug/ul. Centrifuge the vial at 4°C before opening to recover the entire contents.
protein Refseq-Weblink	http://www.ncbi.nlm.nih.gov/protein/NP_004354.2
Unit ID	P06731
Unit ID-Weblink	https://www.uniprot.org/uniprotkb/P06731

GENE INFORMATION

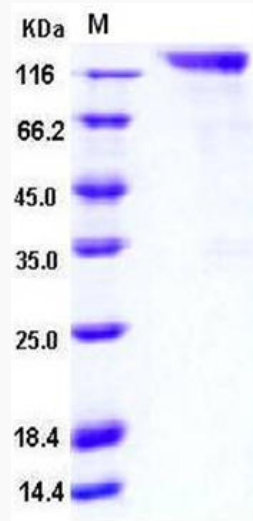
Gene Name	CEACAM5 carcinoembryonic antigen-related cell adhesion molecule 5 [Homo sapiens]
Official Symbol	CEACAM5
Synonyms	CEACAM5; carcinoembryonic antigen-related cell adhesion molecule 5; CEA; CD66e; meconium antigen 100; DKFZp781M2392;
Gene ID	1048
mRNA Refseq	NM_004363
protein Refseq	NP_004354
MIM	114890

 Tel: 1-631-559-9269 1-516-512-3133

 Email: info@creative-biomart.com  Fax: 1-631-938-8127

 45-1 Ramsey Road, Shirley, NY 11967, USA

SDS-PAGE



 Tel: 1-631-559-9269 1-516-512-3133

 Email: info@creative-biomart.com  Fax: 1-631-938-8127

 45-1 Ramsey Road, Shirley, NY 11967, USA