

Recombinant Human CEACAM5 Protein, His-tagged

Cat. No. CEACAM5-732H Lot. No. (See product label)

SPECIFICATION

Product Overview	Recombinant Human CEACAM5 Protein (Ser448-Gly572) with His tag was expressed in E. coli.
Species	Human
Source	E.coli
ProteinLength	Ser448-Gly572
Description	This gene encodes a cell surface glycoprotein that represents the founding member of the carcinoembryonic antigen (CEA) family of proteins. The encoded protein is used as a clinical biomarker for gastrointestinal cancers and may promote tumor development through its role as a cell adhesion molecule. Additionally, the encoded protein may regulate differentiation, apoptosis, and cell polarity. This gene is present in a CEA family gene cluster on chromosome 19. Alternative splicing results in multiple transcript variants.
Form	Freeze-dried powder
Molecular Mass	Predicted Molecular Mass: 15.0 kDa; Accurate Molecular Mass: 14 kDa
Purity	> 95%
Applications	Cell culture; Activity Assays.

 Tel: 1-631-559-9269 1-516-512-3133

 Email: info@creative-biomart.com  Fax: 1-631-938-8127

 45-1 Ramsey Road, Shirley, NY 11967, USA

Stability	The thermal stability is described by the loss rate. The loss rate was determined by accelerated thermal degradation test, that is, incubate the protein at 37 centigrade for 48h, and no obvious degradation and precipitation were observed. The loss rate is less than 5% within the expiration date under appropriate storage condition.
Storage	Avoid repeated freeze/thaw cycles. Store at 2-8 centigrade for one month. Aliquot and store at -80 centigrade for 12 months.
Storage Buffer	20mM Tris, 150mM NaCl, pH8.0, containing 1mM EDTA, 1mM DTT, 0.01% SKL, 5% Trehalose and Proclin300.
Reconstitution	Reconstitute in 20mM Tris, 150mM NaCl (pH8.0) to a concentration of 0.1-1.0 mg/mL. Do not vortex.

GENE INFORMATION

Gene Name	CEACAM5 CEA cell adhesion molecule 5 [Homo sapiens (human)]
Official Symbol	CEACAM5
Synonyms	CEACAM5; CEA cell adhesion molecule 5; CEA; CD66e; carcinoembryonic antigen-related cell adhesion molecule 5; carcinoembryonic antigen related cell adhesion molecule 5; meconium antigen 100
Gene ID	1048
mRNA Refseq	NM_004363
Protein Refseq	NP_004354
MIM	114890

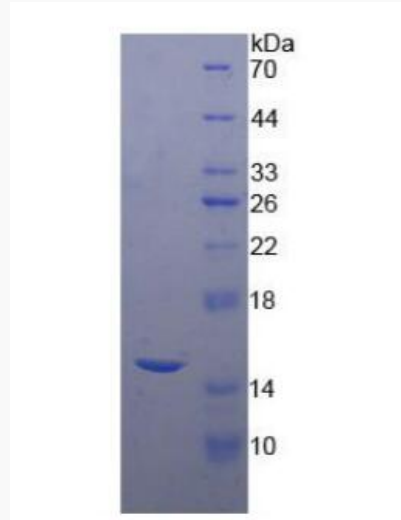
 Tel: 1-631-559-9269 1-516-512-3133

 Email: info@creative-biomart.com  Fax: 1-631-938-8127

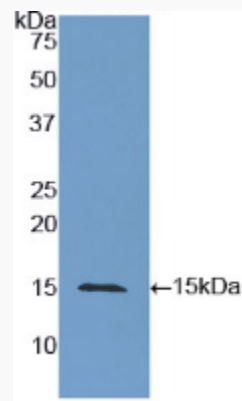
 45-1 Ramsey Road, Shirley, NY 11967, USA

UniProt ID

P06731



WB

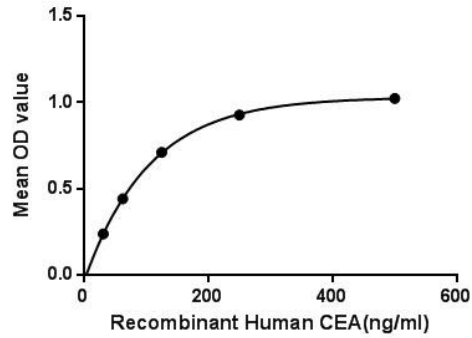


 Tel: 1-631-559-9269 1-516-512-3133

 Email: info@creative-biomart.com  Fax: 1-631-938-8127

 45-1 Ramsey Road, Shirley, NY 11967, USA

Binding activity



 Tel: 1-631-559-9269 1-516-512-3133

 Email: info@creative-biomart.com  Fax: 1-631-938-8127

 45-1 Ramsey Road, Shirley, NY 11967, USA