

Recombinant Human CEACAM6 Protein, GST-Tagged

Cat. No. CEACAM6-1096H Lot. No. (See product label)

SPECIFICATION

Product Overview	Human CEACAM6 full-length ORF (AAH05008.1, 1 a.a. - 344 a.a.) recombinant protein with GST-tag at N-terminal.
Species	Human
Source	Wheat Germ
Description	This gene encodes a protein that belongs to the carcinoembryonic antigen (CEA) family whose members are glycosyl phosphatidyl inositol (GPI) anchored cell surface glycoproteins. Members of this family play a role in cell adhesion and are widely used as tumor markers in serum immunoassay determinations of carcinoma. This gene affects the sensitivity of tumor cells to adenovirus infection. The protein encoded by this gene acts as a receptor for adherent-invasive E. coli adhesion to the surface of ileal epithelial cells in patients with Crohn's disease. This gene is clustered with genes and pseudogenes of the cell adhesion molecules subgroup of the CEA family on chromosome 19. [provided by RefSeq, Apr 2014]
Molecular Mass	63.47 kDa
AA Sequence	MGPPSAPPCLRHPWKEVLLTASLLTFWNPPTTAKLTIESTPFNVAEGKEVLLLAHN LPQNRIGYSWYKGERVDGNSLIVGYVIGTQQATPGPAYSGRETIYPNASLLIQNVTV NDTGFYTLQVIKSDLVNEEATGQFHVYPELPKPSISSNNSNPVEDKDAVAFTCEPEV QNTTYLWWWNGQSLPVSRLQLSNGNMTLTLSSVKRNDAGSYECEIQNPASANRS DPVTLNVLYGPDVPTISPSKANYRPGENLNLSCHAASNPPAQYSWFINGTFQQSTQ

 Tel: 1-631-559-9269 1-516-512-3133


 Email: info@creative-biomart.com  Fax: 1-631-938-8127

 45-1 Ramsey Road, Shirley, NY 11967, USA

	ELFIPNITVNNSSGSYMCQAHNSATGLNRTTVTMITVSGSAPVLSAVATVGITIGVLARV ALI
Applications	Enzyme-linked Immunoabsorbent Assay Western Blot (Recombinant protein) Antibody Production Protein Array
Storage	Store at -80 centigrade. Aliquot to avoid repeated freezing and thawing.
Storage Buffer	50 mM Tris-HCl, 10 mM reduced Glutathione, pH=8.0 in the elution buffer.
GENE INFORMATION	
Gene Name	CEACAM6 carcinoembryonic antigen-related cell adhesion molecule 6 (non-specific cross reacting antigen) [Homo sapiens]
Official Symbol	CEACAM6
Synonyms	CEACAM6; carcinoembryonic antigen-related cell adhesion molecule 6 (non-specific cross reacting antigen); NCA; carcinoembryonic antigen-related cell adhesion molecule 6; CD66c; normal cross-reacting antigen; non-specific crossreacting antigen; CEAL;
Gene ID	4680
mRNA Refseq	NM_002483
Protein Refseq	NP_002474
MIM	163980

 Tel: 1-631-559-9269 1-516-512-3133

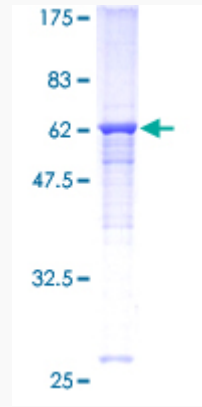
 Email: info@creative-biomart.com  Fax: 1-631-938-8127

 45-1 Ramsey Road, Shirley, NY 11967, USA


UniProt ID

P40199

Quality Control
Testing



12.5% SDS-PAGE Stained with Coomassie Blue.

 Tel: 1-631-559-9269 1-516-512-3133

 Email: info@creative-biomart.com  Fax: 1-631-938-8127

 45-1 Ramsey Road, Shirley, NY 11967, USA