

## Recombinant Human CEACAM6 protein, His-Avi-tagged

Cat. No. CEACAM6-199H Lot. No. (See product label)

### SPECIFICATION

<b>Product Overview</b>	Recombinant Human CEACAM6 protein(P40199)(Lys35-Gly320), fused with C-terminal His and Avi tag, was expressed in HEK293.
<b>Species</b>	Human
<b>Source</b>	HEK293
<b>ProteinLength</b>	Lys35-Gly320
<b>Tag</b>	C-His-Avi
<b>Form</b>	Lyophilized from 0.22µm filtered solution in PBS (pH 7.4). Normally 8% trehalose is added as protectant before lyophilization.
<b>Bio-activity</b>	Human CEACAM-8, His Tag immobilized on CM5 Chip can bind Human CEACAM-6, His Tag with an affinity constant of 4.59 µM as determined in SPR assay (Biacore T200).
<b>Molecular Mass</b>	The protein has a predicted MW of 34.1 kDa. Due to glycosylation, the protein migrates to 55-75 kDa based on Tris-Bis PAGE result.
<b>Endotoxin</b>	Less than 1EU per µg by the LAL method.
<b>Purity</b>	> 95% as determined by Tris-Bis PAGE;> 95% as determined by HPLC

 Tel: 1-631-559-9269 1-516-512-3133

 Email: [info@creative-biomart.com](mailto:info@creative-biomart.com)  Fax: 1-631-938-8127

 45-1 Ramsey Road, Shirley, NY 11967, USA

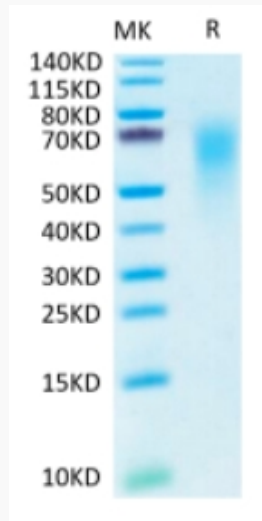
<b>Storage</b>	Reconstituted protein stable at -80°C for 12 months, 4°C for 1 week. Use a manual defrost freezer and avoid repeated freeze-thaw cycles.
<b>Reconstitution</b>	Centrifuge tubes before opening. Reconstituting to a concentration more than 100 µg/ml is recommended. Dissolve the lyophilized protein in distilled water.
<b>GENE INFORMATION</b>	
<b>Gene Name</b>	CEACAM6 carcinoembryonic antigen-related cell adhesion molecule 6 (non-specific cross reacting antigen) [ Homo sapiens ]
<b>Official Symbol</b>	CEACAM6
<b>Synonyms</b>	CEACAM6; carcinoembryonic antigen-related cell adhesion molecule 6 (non-specific cross reacting antigen); NCA; carcinoembryonic antigen-related cell adhesion molecule 6; CD66c; normal cross-reacting antigen; non-specific crossreacting antigen; CEAL;
<b>Gene ID</b>	4680
<b>mRNA Refseq</b>	NM_002483
<b>Protein Refseq</b>	NP_002474
<b>MIM</b>	163980
<b>UniProt ID</b>	P40199

 Tel: 1-631-559-9269 1-516-512-3133

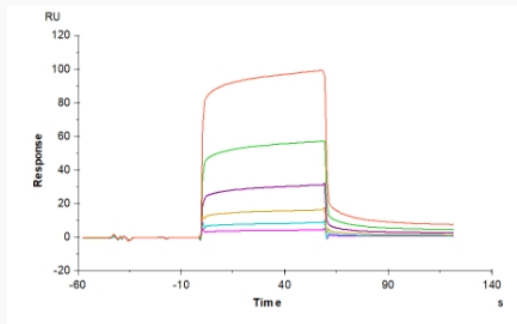
 Email: [info@creative-biomart.com](mailto:info@creative-biomart.com)  Fax: 1-631-938-8127

 45-1 Ramsey Road, Shirley, NY 11967, USA

Tris-Bis PAGE



SPR Data



 Tel: 1-631-559-9269 1-516-512-3133

 Email: [info@creative-biomart.com](mailto:info@creative-biomart.com)  Fax: 1-631-938-8127

 45-1 Ramsey Road, Shirley, NY 11967, USA