

Recombinant Human CEACAM6 protein, His-tagged

Cat. No. CEACAM6-3324H Lot. No. (See product label)

SPECIFICATION

Product Overview	Recombinant Human CEACAM6 protein(Lys35~Pro142), fused with N-terminal His Tag, was expressed in E.coli.
Species	Human
Source	E.coli
ProteinLength	Lys35~Pro142
Form	PBS, pH7.4, containing 0.01% SKL, 1mM DTT, 5% Trehalose and Proclin300.
Molecular Mass	15.62kDa
Endotoxin	<1.0EU per 1g (determined by the LAL method)
Purity	> 95%
Storage	Avoid repeated freeze/thaw cycles. Store at 2-8°C for one month. Aliquot and store at -80°C for 12 months.
Reconstitution	Reconstitute in 10mM PBS (pH7.4) to a concentration of 0.1-1.0 mg/mL. Do not vortex.

GENE INFORMATION

 Tel: 1-631-559-9269 1-516-512-3133

 Email: info@creative-biomart.com  Fax: 1-631-938-8127

 45-1 Ramsey Road, Shirley, NY 11967, USA

Gene Name	CEACAM6 carcinoembryonic antigen-related cell adhesion molecule 6 (non-specific cross reacting antigen) [Homo sapiens]
Official Symbol	CEACAM6
Synonyms	CEACAM6; carcinoembryonic antigen-related cell adhesion molecule 6 (non-specific cross reacting antigen); NCA; carcinoembryonic antigen-related cell adhesion molecule 6; CD66c; normal cross-reacting antigen; non-specific crossreacting antigen; CEAL;
Gene ID	4680
mRNA Refseq	NM_002483
Protein Refseq	NP_002474
MIM	163980
UniProt ID	P40199

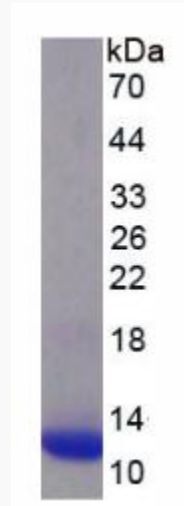
 Tel: 1-631-559-9269 1-516-512-3133

 Email: info@creative-biomart.com  Fax: 1-631-938-8127

 45-1 Ramsey Road, Shirley, NY 11967, USA



SDS-PAGE



Tel: 1-631-559-9269 1-516-512-3133

Email: info@creative-biomart.com Fax: 1-631-938-8127

45-1 Ramsey Road, Shirley, NY 11967, USA