

Recombinant Human CEACAM6 Protein (Met1-Gly320), C-His tagged

Cat. No. CEACAM6-4661H Lot. No. (See product label)

SPECIFICATION

Product Overview	Recombinant human CEACAM6 (Met1-Gly320) fused with the C-terminal His tag was expressed in Mammalian cells.
Species	Human
Source	Mammalian Cells
ProteinLength	Met1-Gly320
Form	Lyophilized powder/frozen liquid
Molecular Mass	35.31 kDa
Endotoxin	< 1.0 EU/μg of the protein as determined by the LAL method.
Purity	>90% as determined by SDS-PAGE.
Notes	For research use only.
Storage	Use a manual defrost freezer and avoid repeated freeze thaw cycles. Store at 2 to 8 centigrade for one week. Store at -20 to -80 centigrade for twelve months from the date of receipt.
Storage Buffer	Supplied as solution form in PBS, pH 7.5 or lyophilized from PBS, pH 7.5.

 Tel: 1-631-559-9269 1-516-512-3133

 Email: info@creative-biomart.com  Fax: 1-631-938-8127

 45-1 Ramsey Road, Shirley, NY 11967, USA

Reconstitution Reconstitute in sterile water for a stock solution.

Shipping They are shipped out with dry ice/blue ice unless customers require otherwise.

GENE INFORMATION

Gene Name CEACAM6 carcinoembryonic antigen-related cell adhesion molecule 6 (non-specific cross reacting antigen) [Homo sapiens (human)]

Official Symbol CEACAM6

Synonyms CEACAM6; carcinoembryonic antigen-related cell adhesion molecule 6 (non-specific cross reacting antigen); NCA; carcinoembryonic antigen-related cell adhesion molecule 6; CD66c; normal cross-reacting antigen; non-specific crossreacting antigen; CEAL;

Gene ID 4680

mRNA Refseq NM_002483

Protein Refseq NP_002474

MIM 163980

UniProt ID P40199

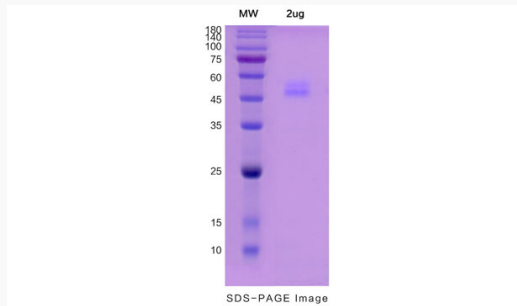
 Tel: 1-631-559-9269 1-516-512-3133

 Email: info@creative-biomart.com  Fax: 1-631-938-8127

 45-1 Ramsey Road, Shirley, NY 11967, USA



SDS-PAGE



Tel: 1-631-559-9269 1-516-512-3133

Email: info@creative-biomart.com Fax: 1-631-938-8127

45-1 Ramsey Road, Shirley, NY 11967, USA