

Recombinant Human CEACAM6 protein, His & T7-tagged

Cat. No. CEACAM6-8197H Lot. No. (See product label)

SPECIFICATION

Product Overview	Recombinant Human CEACAM6 aa. (Lys35~Pro142 (Accession # P40199)) fused with N-terminal His & T7 tag was produced in E. coli cells.
Species	Human
Source	E.coli
ProteinLength	Lys35~Pro142
Description	This gene encodes a protein that belongs to the carcinoembryonic antigen (CEA) family whose members are glycosyl phosphatidyl inositol (GPI) anchored cell surface glycoproteins. Members of this family play a role in cell adhesion and are widely used as tumor markers in serum immunoassay determinations of carcinoma. This gene affects the sensitivity of tumor cells to adenovirus infection. The protein encoded by this gene acts as a receptor for adherent-invasive E. coli adhesion to the surface of ileal epithelial cells in patients with Crohn's disease. This gene is clustered with genes and pseudogenes of the cell adhesion molecules subgroup of the CEA family on chromosome 19.
Form	Freeze-dried powder
Molecular Mass	Predicted Molecular Mass: 15.8kDa.
Endotoxin	<1.0EU per 1ug (determined by the LAL method)

 Tel: 1-631-559-9269 1-516-512-3133

 Email: info@creative-biomart.com  Fax: 1-631-938-8127

 45-1 Ramsey Road, Shirley, NY 11967, USA

Purity	>95%
Characteristic	The isoelectric point is 6.5.
Applications	SDS-PAGE; WB; ELISA; IP.
Stability	The thermal stability is described by the loss rate of the target protein. The loss rate was determined by accelerated thermal degradation test, that is, incubate the protein at 37°C for 48h, and no obvious degradation and precipitation were observed. (Referring from China Biological Products Standard, which was calculated by the Arrhenius equation.) The loss of this protein is less than 5% within the expiration date under appropriate storage condition.
Storage	Avoid repeated freeze/thaw cycles. Store at 2-8°C for one month. Aliquot and store at -80°C for 12 months.
Storage Buffer	Supplied as lyophilized form in PBS, pH7.4, containing 5% trehalose, 0.01% sarcosyl.
Reconstitution	Reconstitute in sterile PBS, pH7.2-pH7.4.

GENE INFORMATION

Gene Name	CEACAM6 carcinoembryonic antigen related cell adhesion molecule 6 [Homo sapiens (human)]
Official Symbol	CEACAM6
Synonyms	CEACAM6; carcinoembryonic antigen related cell adhesion molecule 6; NCA; CEAL; CD66c; carcinoembryonic antigen-related cell adhesion molecule 6; Cluster of Differentiation 66c; carcinoembryonic antigen-related cell adhesion molecule 6 (non-specific cross reacting antigen); normal cross-reacting antigen

 Tel: 1-631-559-9269 1-516-512-3133

 Email: info@creative-biomart.com  Fax: 1-631-938-8127

 45-1 Ramsey Road, Shirley, NY 11967, USA

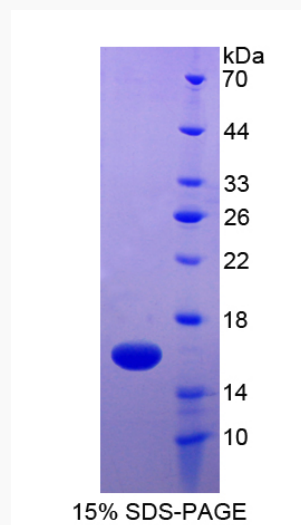
Gene ID 4680

mRNA Refseq NM_002483.6

Protein Refseq NP_002474.4

UniProt ID P40199

SDS-PAGE



 Tel: 1-631-559-9269 1-516-512-3133

 Email: info@creative-biomart.com  Fax: 1-631-938-8127

 45-1 Ramsey Road, Shirley, NY 11967, USA