

# Recombinant Full Length Human CEACAM7 Protein, C-Flag-tagged

**Cat. No.** CEACAM7-1835HFL    **Lot. No.** (See product label)

## SPECIFICATION

### Product Overview

Recombinant Full Length Human CEACAM7 Protein, fused to Flag-tag at C-terminus, was expressed in Mammalian cells.

### Species

Human

### Source

Mammalian Cells

### Description

This gene encodes a cell surface glycoprotein and member of the carcinoembryonic antigen (CEA) family of proteins. Expression of this gene may be downregulated in colon and rectal cancer. Additionally, lower expression levels of this gene may be predictive of rectal cancer recurrence. This gene is present in a CEA family gene cluster on chromosome 19. Alternative splicing results in multiple transcript variants.

### Form

25 mM Tris HCl, pH 7.3, 100 mM glycine, 10% glycerol.

### Molecular Mass

29.2 kDa

### AA Sequence

MGSPSACPYRVCIPWQGLLLTASLLTFWNLPSAQTNIDVVPFNVAEGKEVLLVVHN  
 ESQNLGYNWKYK ERVHANYRIIGYVKNISQENAPGPAHNGRETIYPNGTLLIQNVT  
 HNDAGIYTLHVIKENLVNEEVTRQFY VFSEPPKPSITSNNFNPVENKDIVLTCQPET  
 QNTTYLWWWNNQSLLVSPRLLLSTDNRTLVLSSATKND IGPYECEIQNPVGASRSD  
 PVTLNRYYESVQASSPDL SAGTAVSIMIGVLAGMALI TRTRPLEQKLI SEEDLAANDIL  
 DYKDDDDKV

 Tel: 1-631-559-9269    1-516-512-3133

 Email: [info@creative-biomart.com](mailto:info@creative-biomart.com)     Fax: 1-631-938-8127

 45-1 Ramsey Road, Shirley, NY 11967, USA

<b>Purity</b>	> 80% as determined by SDS-PAGE and Coomassie blue staining.
<b>Stability</b>	Stable for 12 months from the date of receipt of the product under proper storage and handling conditions. Avoid repeated freeze-thaw cycles.
<b>Storage</b>	Store at -80 centigrade.
<b>Concentration</b>	>50 ug/mL as determined by microplate BCA method.
<b>Preparation</b>	Recombinant protein was captured through anti-DDK affinity column followed by conventional chromatography steps.
<b>Full Length</b>	Full L.

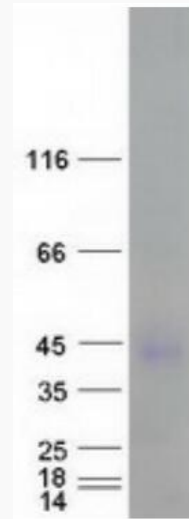
## GENE INFORMATION

<b>Gene Name</b>	CEACAM7 CEA cell adhesion molecule 7 [ Homo sapiens (human) ]
<b>Official Symbol</b>	CEACAM7
<b>Synonyms</b>	CGM2
<b>Gene ID</b>	1087
<b>mRNA Refseq</b>	NM_006890.5
<b>Protein Refseq</b>	NP_008821.2
<b>MIM</b>	619160
<b>UniProt ID</b>	Q14002

 Tel: 1-631-559-9269 1-516-512-3133

 Email: [info@creative-biomart.com](mailto:info@creative-biomart.com)  Fax: 1-631-938-8127

 45-1 Ramsey Road, Shirley, NY 11967, USA



Coomassie blue staining of purified CEACAM7 protein.

 Tel: 1-631-559-9269 1-516-512-3133

 Email: [info@creative-biomart.com](mailto:info@creative-biomart.com)  Fax: 1-631-938-8127

 45-1 Ramsey Road, Shirley, NY 11967, USA