

Recombinant Human CEACAM8 Protein, GST-Tagged

Cat. No. CEACAM8-1098H Lot. No. (See product label)

SPECIFICATION

Product Overview	Human CEACAM8 full-length ORF (AAH26263, 1 a.a. - 349 a.a.) recombinant protein with GST-tag at N-terminal.
Species	Human
Source	Wheat Germ
Description	CEACAM8 (Carcinoembryonic Antigen Related Cell Adhesion Molecule 8) is a Protein Coding gene. Diseases associated with CEACAM8 include Endocarditis and Shwartzman Phenomenon. Among its related pathways are Innate Immune System and Cell surface interactions at the vascular wall. An important paralog of this gene is CEACAM1.
Molecular Mass	64.02 kDa
AA Sequence	<p>MGPISAPSCRWRIPWQGLLLTASLFTFWNPPTTAQLTIEAVPSNAAEGKEVLLL VHN LPQDPRGYNWYKGETVDANRRIIGYVISNQQITPGPAYSNRETIYPNASLLMRNVTR NDTGSYTLQVIKLNLMSEEVTGQFSVHPETPKPSSISNNSNPVEDKDAVAFTCEPET QNTTYLWWWNGQSLPVSRLQLSNGNRTLTLSSVTRNDVGPYECEIQNPASANFSD PVTNLVLYGPDAPTISPSDTYYHAGVNLNLSCHAASNPPSQYSWSVNGTFQQYTQK LFIPNITTKNSGSYACHTTNSATGRNRTTVRMITVSDALVQGSSPGLSARATV/SIMIG VLARVALI</p>
Applications	Enzyme-linked Immunoabsorbent Assay Western Blot (Recombinant protein)

 Tel: 1-631-559-9269 1-516-512-3133

 Email: info@creative-biomart.com  Fax: 1-631-938-8127

 45-1 Ramsey Road, Shirley, NY 11967, USA

Antibody Production
Protein Array

Storage Store at -80 centigrade. Aliquot to avoid repeated freezing and thawing.

Storage Buffer 50 mM Tris-HCl, 10 mM reduced Glutathione, pH=8.0 in the elution buffer.

GENE INFORMATION

Gene Name CEACAM8 carcinoembryonic antigen-related cell adhesion molecule 8 [Homo sapiens]

Official Symbol CEACAM8

Synonyms CEACAM8; carcinoembryonic antigen-related cell adhesion molecule 8; CGM6; CD66b; CD67 antigen; carcinoembryonic antigen CGM6; non-specific cross-reacting antigen NCA-95; carcinoembryonic antigen gene family member 6; CD67; NCA-95;

Gene ID 1088

mRNA Refseq NM_001816

Protein Refseq NP_001807

MIM 615747

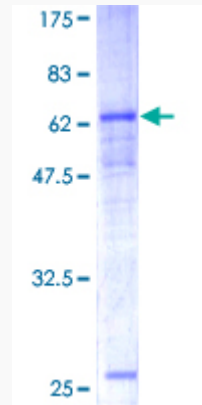
UniProt ID P31997

 Tel: 1-631-559-9269 1-516-512-3133

 Email: info@creative-biomart.com  Fax: 1-631-938-8127

 45-1 Ramsey Road, Shirley, NY 11967, USA

**Quality Control
Testing**



12.5% SDS-PAGE Stained with Coomassie Blue.

 Tel: 1-631-559-9269 1-516-512-3133

 Email: info@creative-biomart.com  Fax: 1-631-938-8127

 45-1 Ramsey Road, Shirley, NY 11967, USA