

## Recombinant Human CEBPB Protein, GST-Tagged

Cat. No. CEBPB-1101H Lot. No. (See product label)

### SPECIFICATION

**Product Overview** Human CEBPB full-length ORF (AAH21931.1, 1 a.a. - 345 a.a.) recombinant protein with GST-tag at N-terminal.

**Species** Human

**Source** Wheat Germ

**Description** This intronless gene encodes a transcription factor that contains a basic leucine zipper (bZIP) domain. The encoded protein functions as a homodimer but can also form heterodimers with CCAAT/enhancer-binding proteins alpha, delta, and gamma. Activity of this protein is important in the regulation of genes involved in immune and inflammatory responses, among other processes. The use of alternative in-frame AUG start codons results in multiple protein isoforms, each with distinct biological functions. [provided by RefSeq, Oct 2013]

**Molecular Mass** 62.5 kDa

**AA Sequence**

```

MQRLVAWDPACLPLPPPPPAFKSMEVANFYEADCLAAAYGGKAAPAAPPAARPG
PRPPAGELGSIGDHERAIDFSPYLEPLGAPQAPAPATATDTFEAAPPAPAPASSG
QHHDFLSDLFSDDYGGKNCKKPAEYGYVSLGRLGAAKGALHPGCFAPLHPPPPPP
PPPAELKAEPGFEPADCKRKEEAGAPGGGAGMAAGFPYALRAYLGYQAVPSGSSG
SLSTSSSSSPPGTPSPADAKAPPTACYAGAAPAPSQVKSKAKKTVDKHSDEYKIRRE
RNNIAVRKSRDKAKMRNLETQHKVLELTAENERLQKKVEQLSRELSTLRNLFKQLPE
PLASSGHC
    
```

 Tel: 1-631-559-9269 1-516-512-3133

 Email: [info@creative-biomart.com](mailto:info@creative-biomart.com)  Fax: 1-631-938-8127

 45-1 Ramsey Road, Shirley, NY 11967, USA

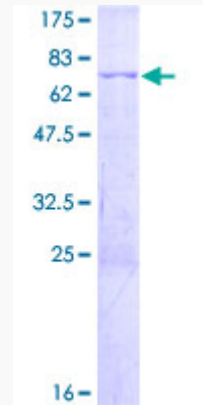
<b>Applications</b>	Enzyme-linked Immunoabsorbent Assay Western Blot (Recombinant protein) Antibody Production Protein Array
<b>Storage</b>	Store at -80 centigrade. Aliquot to avoid repeated freezing and thawing.
<b>Storage Buffer</b>	50 mM Tris-HCl, 10 mM reduced Glutathione, pH=8.0 in the elution buffer.
<b>GENE INFORMATION</b>	
<b>Gene Name</b>	CEBPB CCAAT/enhancer binding protein (C/EBP), beta [ Homo sapiens ]
<b>Official Symbol</b>	CEBPB
<b>Synonyms</b>	CEBPB; CCAAT/enhancer binding protein (C/EBP), beta; TCF5; CCAAT/enhancer-binding protein beta; C/EBP beta; CRP2; IL6DBP; interleukin 6 dependent DNA binding protein; LAP; liver enriched transcriptional activator protein; NFIL6; nuclear factor of interleukin 6; TCF-5; nuclear factor NF-IL6; transcription factor 5; interleukin 6-dependent DNA-binding protein; liver-enriched transcriptional activator protein; NF-IL6; C/EBP-beta; MGC32080;
<b>Gene ID</b>	1051
<b>mRNA Refseq</b>	NM_005194
<b>Protein Refseq</b>	NP_005185
<b>MIM</b>	189965
<b>UniProt ID</b>	P17676

 Tel: 1-631-559-9269 1-516-512-3133

 Email: [info@creative-biomart.com](mailto:info@creative-biomart.com)  Fax: 1-631-938-8127

 45-1 Ramsey Road, Shirley, NY 11967, USA

**Quality Control  
Testing**



12.5% SDS-PAGE Stained with Coomassie Blue.

 Tel: 1-631-559-9269 1-516-512-3133

 Email: [info@creative-biomart.com](mailto:info@creative-biomart.com)  Fax: 1-631-938-8127

 45-1 Ramsey Road, Shirley, NY 11967, USA