

# Recombinant Human CEBPB Protein (Met199-Cys345), N-His tagged

Cat. No. CEBPB-1249H    Lot. No. (See product label)

## SPECIFICATION

<b>Product Overview</b>	Recombinant Human CEBPB (Met199-Cys345) fused with the N-His tag was expressed in E. coli.
<b>Species</b>	Human
<b>Source</b>	E.coli
<b>ProteinLength</b>	Met199-Cys345
<b>Form</b>	Lyophilized powder/frozen liquid
<b>Molecular Mass</b>	18.25 kDa
<b>Purity</b>	>90% as determined by SDS-PAGE.
<b>Notes</b>	For research use only.
<b>Storage</b>	Use a manual defrost freezer and avoid repeated freeze thaw cycles. Store at 2 to 8 centigrade for one week. Store at -20 to -80 centigrade for twelve months from the date of receipt.
<b>Storage Buffer</b>	0.01M PBS, pH 7.4, 0.02% NLS
<b>Reconstitution</b>	Reconstitute in sterile water for a stock solution.

 Tel: 1-631-559-9269    1-516-512-3133

 Email: [info@creative-biomart.com](mailto:info@creative-biomart.com)     Fax: 1-631-938-8127

 45-1 Ramsey Road, Shirley, NY 11967, USA

**Shipping** They are shipped out with dry ice/blue ice unless customers require otherwise.

## GENE INFORMATION

**Gene Name** CEBPB CCAAT/enhancer binding protein (C/EBP), beta [ Homo sapiens (human) ]

**Official Symbol** CEBPB

**Synonyms** CEBPB; CCAAT/enhancer binding protein (C/EBP), beta; TCF5; CCAAT/enhancer-binding protein beta; C/EBP beta; CRP2; IL6DBP; interleukin 6 dependent DNA binding protein; LAP; liver enriched transcriptional activator protein; NFIL6; nuclear factor of interleukin 6; TCF-5; nuclear factor NF-IL6; transcription factor 5; interleukin 6-dependent DNA-binding protein; liver-enriched transcriptional activator protein; NF-IL6; C/EBP-beta; MGC32080;

**Gene ID** 1051

**mRNA Refseq** NM\_005194

**Protein Refseq** NP\_005185

**MIM** 189965

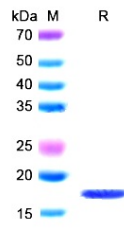
**UniProt ID** P17676

 Tel: 1-631-559-9269 1-516-512-3133

 Email: [info@creative-biomart.com](mailto:info@creative-biomart.com)  Fax: 1-631-938-8127

 45-1 Ramsey Road, Shirley, NY 11967, USA

**SDS-PAGE**



 Tel: 1-631-559-9269 1-516-512-3133

 Email: [info@creative-biomart.com](mailto:info@creative-biomart.com)  Fax: 1-631-938-8127

 45-1 Ramsey Road, Shirley, NY 11967, USA