

Recombinant Human CEBPG Protein (Met1-Gln150), N-His tagged

Cat. No. CEBPG-0804H Lot. No. (See product label)

SPECIFICATION

| | |
|-------------------------|---|
| Product Overview | Recombinant Human CEBPG (Met1-Gln150) fused with the N-His tag was expressed in E. coli. |
| Species | Human |
| Source | E.coli |
| ProteinLength | Met1-Gln150 |
| Form | Lyophilized powder/frozen liquid |
| Molecular Mass | 18.72 kDa |
| Purity | >90% as determined by SDS-PAGE. |
| Notes | For research use only. |
| Storage | Use a manual defrost freezer and avoid repeated freeze thaw cycles. Store at 2 to 8 centigrade for one week. Store at -20 to -80 centigrade for twelve months from the date of receipt. |
| Storage Buffer | 0.01M PBS, pH 7.4, 0.02% NLS |
| Reconstitution | Reconstitute in sterile water for a stock solution. |

 Tel: 1-631-559-9269 1-516-512-3133

 Email: info@creative-biomart.com  Fax: 1-631-938-8127

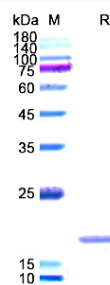
 45-1 Ramsey Road, Shirley, NY 11967, USA

Shipping

They are shipped out with dry ice/blue ice unless customers require otherwise.

GENE INFORMATION

| | |
|------------------------|--|
| Gene Name | CEBPG CCAAT/enhancer binding protein (C/EBP), gamma [Homo sapiens (human)] |
| Official Symbol | CEBPG |
| Synonyms | CEBPG; CCAAT/enhancer binding protein (C/EBP), gamma; CCAAT/enhancer-binding protein gamma; GPE1BP; IG/EBP 1; c/EBP gamma; IG/EBP-1; |
| Gene ID | 1054 |
| mRNA Refseq | NM_001252296 |
| Protein Refseq | NP_001239225 |
| MIM | 138972 |
| UniProt ID | P53567 |

SDS-PAGE


Tel: 1-631-559-9269 1-516-512-3133

Email: info@creative-biomart.com Fax: 1-631-938-8127

45-1 Ramsey Road, Shirley, NY 11967, USA