

Recombinant Human CEBPG Protein, GST-Tagged

Cat. No. CEBPG-1105H Lot. No. (See product label)

SPECIFICATION

Product Overview	Human CEBPG full-length ORF (AAH13128, 1 a.a. - 150 a.a.) recombinant protein with GST-tag at N-terminal.
Species	Human
Source	Wheat Germ
Description	The C/EBP family of transcription factors regulates viral and cellular CCAAT/enhancer element-mediated transcription. C/EBP proteins contain the bZIP region, which is characterized by two motifs in the C-terminal half of the protein: a basic region involved in DNA binding and a leucine zipper motif involved in dimerization. The C/EBP family consist of several related proteins, C/EBP alpha, C/EBP beta, C/EBP gamma, and C/EBP delta, that form homodimers and that form heterodimers with each other. CCAAT/enhancer binding protein gamma may cooperate with Fos to bind PRE-I enhancer elements. Two transcript variants encoding the same protein have been found for this gene. [provided by RefSeq, Nov 2011]
Molecular Mass	42.24 kDa
AA Sequence	MSKISQQNSTPGVNGISVIHTQAHASGLQQVPQLVPAGPGGGGKAVAPSKQSKKSS PMDRNSDEYRQRRERNNMAVKKSRLKSKQKAQDTLQRVNQLKEENERLEAKIKLLT KELSVLKDLFLEHAHNLADNVQSISTENTTADGDNAGQ
Applications	Enzyme-linked Immunoabsorbent Assay Western Blot (Recombinant protein)

 Tel: 1-631-559-9269 1-516-512-3133

 Email: info@creative-biomart.com  Fax: 1-631-938-8127

 45-1 Ramsey Road, Shirley, NY 11967, USA

Antibody Production
Protein Array

Storage Store at -80 centigrade. Aliquot to avoid repeated freezing and thawing.

Storage Buffer 50 mM Tris-HCl, 10 mM reduced Glutathione, pH=8.0 in the elution buffer.

GENE INFORMATION

Gene Name CEBPG CCAAT/enhancer binding protein (C/EBP), gamma [Homo sapiens]

Official Symbol CEBPG

Synonyms CEBPG; CCAAT/enhancer binding protein (C/EBP), gamma; CCAAT/enhancer-binding protein gamma; GPE1BP; IG/EBP 1; c/EBP gamma; IG/EBP-1;

Gene ID 1054

mRNA Refseq NM_001252296

Protein Refseq NP_001239225

MIM 138972

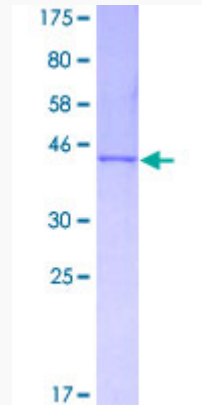
UniProt ID P53567

 Tel: 1-631-559-9269 1-516-512-3133

 Email: info@creative-biomart.com  Fax: 1-631-938-8127

 45-1 Ramsey Road, Shirley, NY 11967, USA

**Quality Control
Testing**



12.5% SDS-PAGE Stained with Coomassie Blue.

 Tel: 1-631-559-9269 1-516-512-3133

 Email: info@creative-biomart.com  Fax: 1-631-938-8127

 45-1 Ramsey Road, Shirley, NY 11967, USA