

## Recombinant Aeromonas CED40 protein

Cat. No. CED40 Lot. No. (See product label)

### SPECIFICATION

<b>Product Overview</b>	Recombinant Aeromonas CED40 protein was expressed in Escherichia coli.
<b>Species</b>	Aeromonas
<b>Source</b>	E.coli
<b>ProteinLength</b>	291
<b>Form</b>	Lyophilized from a 0.2µm filtered concentrated solution in 20 mM Tris, 150 mM NaCl, 5µM ZnSO <sub>4</sub> , pH 8.0.
<b>Bio-activity</b>	Sequentially cleaves N-terminal amino acids except E, D, and X-P.
<b>Molecular Mass</b>	Approximately 31.4 kDa, a single non-glycosylated polypeptide chain containing 291 amino acids.
<b>AA Sequence</b>	MPPITQQATVTAWLPQVDASQITGTISSLESFTNRFYTTTSGAQASDWIASEWQALS ASLPNASVKQVSHSGYNQKSVVMTITGSEAPDEWIVIGGHLSTIGSHTNEQSVAPG ADDDASGIAAVTEVIRVLSENNFPKRSIAFMAYAAEEVGLRGSQDLANQYKSEGKN VVSALQLDMTNYKGSQAQDVVFITDYTDSNFTQYLTQLMDEYLPSLTYGFDTCGYAC SDHASWHNAGYPAAMPFESKFNDYNPRIHTTQDTLANS DPTGSHAKKFTQLGLAYA IEMGSATG
<b>Endotoxin</b>	Less than 0.1 EU/g of rAeromonas Aminopeptidase as determined by LAL method.

 Tel: 1-631-559-9269 1-516-512-3133

 Email: [info@creative-biomart.com](mailto:info@creative-biomart.com)  Fax: 1-631-938-8127

 45-1 Ramsey Road, Shirley, NY 11967, USA

**Purity** >98% by SDS-PAGE and HPLC analysis.

**Storage**

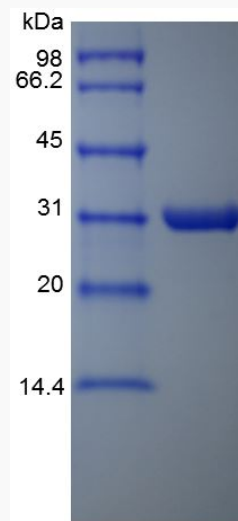
Use a manual defrost freezer and avoid repeated freeze-thaw cycles. 12 months from date of receipt, -20 to -70 centigrade as supplied. 1 month, 2 to 8 centigrade under sterile conditions after reconstitution. 3 months, -20 to -70 centigrade under sterile conditions after reconstitution.

**Reconstitution**

We recommend that this vial be briefly centrifuged prior to opening to bring the contents to the bottom. Reconstitute in sterile distilled water or aqueous buffer to a concentration of 0.1-1.0 mg/mL. Stock solutions should be apportioned into working aliquots and stored at  $\leq -20$  centigrade. Further dilutions should be made in appropriate buffered solutions.

**GENE INFORMATION****UniProt ID**

Q01693

**SDS-PAGE of CED40**

 Tel: 1-631-559-9269 1-516-512-3133

 Email: [info@creative-biomart.com](mailto:info@creative-biomart.com)  Fax: 1-631-938-8127

 45-1 Ramsey Road, Shirley, NY 11967, USA