

Recombinant Full Length Human CELA3B Protein, N-GST/C-His-tagged

Cat. No. CELA3B-14HFL **Lot. No.** (See product label)

SPECIFICATION

Product Overview	Recombinant Full Length Human CELA3B Protein, fused to GST-tag at N-terminus and His-tag at C-terminus, was expressed in E. coli.
Species	Human
Source	E.coli
Description	<p>Elastases form a subfamily of serine proteases that hydrolyze many proteins in addition to elastin. Humans have six elastase genes which encode the structurally similar proteins elastase 1, 2, 2A, 2B, 3A, and 3B. Unlike other elastases, elastase 3B has little elastolytic activity. Like most of the human elastases, elastase 3B is secreted from the pancreas as a zymogen and, like other serine proteases such as trypsin, chymotrypsin and kallikrein, it has a digestive function in the intestine. Elastase 3B preferentially cleaves proteins after alanine residues. Elastase 3B may also function in the intestinal transport and metabolism of cholesterol. Both elastase 3A and elastase 3B have been referred to as protease E and as elastase 1, and excretion of this protein in fecal material is frequently used as a measure of pancreatic function in clinical assays.</p>
Form	50mM Tris, pH8.0, 8M Urea.
Molecular Mass	29.3 kDa
AA Sequence	A DNA sequence encoding the region full length of CELA3B

 Tel: 1-631-559-9269 1-516-512-3133

 Email: info@creative-biomart.com  Fax: 1-631-938-8127

 45-1 Ramsey Road, Shirley, NY 11967, USA

Purity	> 80% as determined by SDS-PAGE and Coomassie blue staining.
Stability	Stable for 12 months from the date of receipt of the product under proper storage and handling conditions. Avoid repeated freeze-thaw cycles.
Storage	Store at -80 centigrade after receiving vials.
Concentration	>0.05 g/μ as determined by microplate BCA method.
Protein Families	Druggable Genome, Protease
Full Length	Full L.

GENE INFORMATION

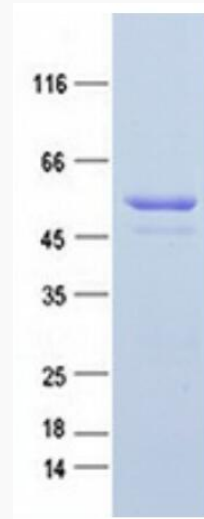
Gene Name	CELA3B chymotrypsin like elastase 3B [Homo sapiens (human)]
Official Symbol	CELA3B
Synonyms	CBPP; ELA3B
Gene ID	23436
mRNA Refseq	NM_007352.4
Protein Refseq	NP_031378.1
MIM	618694
UniProt ID	P08861

 Tel: 1-631-559-9269 1-516-512-3133

 Email: info@creative-biomart.com  Fax: 1-631-938-8127

 45-1 Ramsey Road, Shirley, NY 11967, USA

SDS-PAGE



Coomassie blue staining of purified CELA3B protein.

 Tel: 1-631-559-9269 1-516-512-3133

 Email: info@creative-biomart.com  Fax: 1-631-938-8127

 45-1 Ramsey Road, Shirley, NY 11967, USA