

Recombinant Full Length Human CELF1 Protein, C-Flag-tagged

Cat. No. CELF1-1436HFL **Lot. No.** (See product label)

SPECIFICATION

Product Overview	Recombinant Full Length Human CELF1 Protein, fused to Flag-tag at C-terminus, was expressed in Mammalian cells.
Species	Human
Source	Mammalian Cells
Description	Members of the CELF/BRUNOL protein family contain two N-terminal RNA recognition motif (RRM) domains, one C-terminal RRM domain, and a divergent segment of 160-230 aa between the second and third RRM domains. Members of this protein family regulate pre-mRNA alternative splicing and may also be involved in mRNA editing, and translation. This gene may play a role in myotonic dystrophy type 1 (DM1) via interactions with the dystrophin myotonia-protein kinase (DMPK) gene. Alternative splicing results in multiple transcript variants encoding different isoforms.
Form	25 mM Tris HCl, pH 7.3, 100 mM glycine, 10% glycerol.
Molecular Mass	51.4 kDa
AA Sequence	MNGTLDHPDQPDLDIAIKMFVGGVPRTWSEKDLRELFEQYGAVYEINVLDRSQNPP QSKGCCFVTFYTRK AALEAQNALHNMKVLPGMHHPIQMKPADSEKNNAVEDRKLFI GMISKKCTENDIRVMFSSFGQIEECRIL RGPDGLSRGCAFVTFTRAMAQTAIKAMH QAQTMEGCSPMVVKFADTQKDKEQKRMAQQLQQMQQISA ASVWGNLAGLNT LGPQYLALLQQTASSGNLNTLSSLHPMGGLNAMQLQNLAALAAAASAAQNTPSGTN

 Tel: 1-631-559-9269 1-516-512-3133

 Email: info@creative-biomart.com  Fax: 1-631-938-8127

 45-1 Ramsey Road, Shirley, NY 11967, USA

AL TTSSSPLSVLTSSAGSSPSSSSSSNSVNPIASLGALQTLAGATAGLNVGSLAGMAA
 LNGGLGSSGLSNGTG STMEALTQAYSGIQQYAAAALPTLYNQNLTTQQSIGAAGSQ
 KEGPEGANLFIYHLPQEFQDQDLLQMFMP
 FGNVVS AKVFDKQTNLSKCFGFVSYDNPVSAQAIAIQSMNGFQIGMKRLKVQLKRSK
 NDSKPYTRTRPLEQKLISEEDLAANDILDYKDDDDKV

Purity > 80% as determined by SDS-PAGE and Coomassie blue staining.

Stability Stable for 12 months from the date of receipt of the product under proper storage and handling conditions. Avoid repeated freeze-thaw cycles.

Storage Store at -80 centigrade.

Concentration >50 ug/mL as determined by microplate BCA method.

Preparation Recombinant protein was captured through anti-DDK affinity column followed by conventional chromatography steps.

Protein Families Druggable Genome

Full Length Full L.

GENE INFORMATION

Gene Name [CELF1 CUGBP Elav-like family member 1 \[Homo sapiens \(human\) \]](#)

Official Symbol [CELF1](#)

Synonyms CUGBP; NAB50; NAPOR; CUG-BP; CUGBP1; hNab50; BRUNOL2; EDEN-BP

Gene ID [10658](#)

 Tel: 1-631-559-9269 1-516-512-3133

 Email: info@creative-biomart.com  Fax: 1-631-938-8127

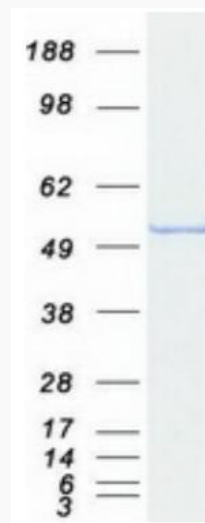
 45-1 Ramsey Road, Shirley, NY 11967, USA

mRNA Refseq [NM_006560.4](#)

Protein Refseq [NP_006551.1](#)

MIM [601074](#)

UniProt ID [Q92879](#)



Coomassie blue staining of purified CELF1 protein.

 Tel: 1-631-559-9269 1-516-512-3133

 Email: info@creative-biomart.com  Fax: 1-631-938-8127

 45-1 Ramsey Road, Shirley, NY 11967, USA