

## Recombinant Human CELF1 Protein, GST-tagged

Cat. No. CELF1-2127H Lot. No. (See product label)

### SPECIFICATION

<b>Product Overview</b>	Human CUGBP1 full-length ORF ( NP_941989.1, 1 a.a. - 483 a.a.) recombinant protein with GST-tag at N-terminal.
<b>Species</b>	Human
<b>Source</b>	Wheat Germ
<b>Description</b>	Members of the CELF/BRUNOL protein family contain two N-terminal RNA recognition motif (RRM) domains, one C-terminal RRM domain, and a divergent segment of 160-230 aa between the second and third RRM domains. Members of this protein family regulate pre-mRNA alternative splicing and may also be involved in mRNA editing, and translation. This gene may play a role in myotonic dystrophy type 1 (DM1) via interactions with the dystrophia myotonica-protein kinase (DMPK) gene. Alternative splicing results in multiple transcript variants encoding different isoforms. [provided by RefSeq, Jul 2008]
<b>Molecular Mass</b>	78 kDa
<b>AA Sequence</b>	MNGTLDHPDQPDLDAIKMFVGGVPRTWSEKDLRELFEQYGAVYEINVLRDRSQNPP QSKGCCFVTFYTRKAALEAQNALHNMKVLPGMHHPQMKPADSEKNNAVEDRKLFI GMISKKCTENDIRVMFSSFGQIEECRILRGPDGLSRGCAFVFTTTRAMAQTAIKAMH QAQTMEGCSSPMVVVKFADTQKDKEQKRMAQQLQQMQQISAASVWGNLAGLNTL GPQYLALLQQTASSGNLNTLSSLHPMGGLNAMQLQNLAAALAAAASAAQNTPSGTNA LTTSSSPLSVLTSSAGSSPSSSSSSNSVNPIASLGALQTLGATAGLNVGSLAGMAAL

 Tel: 1-631-559-9269 1-516-512-3133

 Email: [info@creative-biomart.com](mailto:info@creative-biomart.com)  Fax: 1-631-938-8127

 45-1 Ramsey Road, Shirley, NY 11967, USA



NGGLGSSGLSNGTGSTMEALTQAYSGIQQYAAAALPTLYNQNLTTQQSIGAAGSQK  
EGPEGANLFIYHLPQEFQDQDLLQMFMPFGNVVSAKVFDKQTNLSKCFGFVSYDN  
PVSAQAAIQSMNGFQIGMKRLKVQLKRSKNDSPY

**Applications**  
Enzyme-linked Immunoabsorbent Assay  
Western Blot (Recombinant protein)  
Antibody Production  
Protein Array

**Notes** Best use within three months from the date of receipt of this protein.

**Storage** Store at -80 centigrade. Aliquot to avoid repeated freezing and thawing.

**Storage Buffer** 50 mM Tris-HCl, 10 mM reduced Glutathione, pH=8.0 in the elution buffer.

## GENE INFORMATION

**Gene Name** CELF1 CUGBP, Elav-like family member 1 [ Homo sapiens ]

**Official Symbol** CELF1

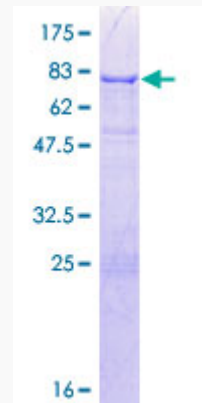
**Synonyms** CELF1; CUGBP, Elav-like family member 1; CUG triplet repeat, RNA binding protein 1 , CUG triplet repeat, RNA binding protein 1 , CUGBP1; CUGBP Elav-like family member 1; bruno like 2; BRUNOL2; CUG RNA binding protein; CUG BP; CUGBP; EDEN BP; embryo deadenylation element binding protein; hNab50; NAB50; NAPOR; nuclear polyadenylated RNA binding protein; 50 kD; CELF-1; CUG-BP1; bruno-like 2; EDEN-BP homolog; bruno-like protein 2; CUG RNA-binding protein; deadenylation factor CUG-BP; RNA-binding protein BRUNOL-2; CUG-BP- and ETR-3-like factor 1; CUG triplet repeat RNA-binding protein 1; CUG triplet repeat, RNA binding protein 1; CUG triplet repeat, RNA-binding protein 1; 50 kDa nuclear polyadenylated RNA-binding protein; nuclear polyadenylated RNA-binding protein, 50-kD; embryo

Tel: 1-631-559-9269 1-516-512-3133

Email: [info@creative-biomart.com](mailto:info@creative-biomart.com) Fax: 1-631-938-8127

45-1 Ramsey Road, Shirley, NY 11967, USA

deadenylation element-binding protein homolog; CUG-BP; CUGBP1; EDEN-BP;

**Gene ID** 10658**mRNA Refseq** NM\_001025596**Protein Refseq** NP\_001020767**MIM** 601074**UniProt ID** Q92879**Quality Control  
Testing:**

12.5% SDS-PAGE Stained with Coomassie Blue.

 Tel: 1-631-559-9269 1-516-512-3133 Email: [info@creative-biomart.com](mailto:info@creative-biomart.com)  Fax: 1-631-938-8127 45-1 Ramsey Road, Shirley, NY 11967, USA