

## Recombinant Human CELF1 protein, His-tagged

Cat. No. CELF1-6334H Lot. No. (See product label)

### SPECIFICATION

<b>Product Overview</b>	Recombinant Human CELF1 protein(Q92879)(1-486aa), fused with C-terminal His tag, was expressed in E.coli.
<b>Species</b>	Human
<b>Source</b>	E.coli
<b>ProteinLength</b>	1-486a.a.
<b>Tag</b>	His
<b>Form</b>	If the delivery form is liquid, the default storage buffer is Tris/PBS-based buffer, 5%-50% glycerol. If the delivery form is lyophilized powder, the buffer before lyophilization is Tris/PBS-based buffer, 6% Trehalose, pH 8.0.
<b>Molecular Mass</b>	59.0 kDa
<b>Purity</b>	Greater than 90% as determined by SDS-PAGE.
<b>Storage</b>	Store at -20°C/-80°C upon receipt, aliquoting is necessary for mutiple use. Avoid repeated freeze-thaw cycles.
<b>Reconstitution</b>	We recommend that this vial be briefly centrifuged prior to opening to bring the contents to the bottom. Please reconstitute protein in deionized sterile water to a concentration of 0.1-1.0 mg/mL.We recommend to add 5-50% of glycerol (final

 Tel: 1-631-559-9269 1-516-512-3133

 Email: [info@creative-biomart.com](mailto:info@creative-biomart.com)  Fax: 1-631-938-8127

 45-1 Ramsey Road, Shirley, NY 11967, USA

concentration) and aliquot for long-term storage at -20°C/-80°C.

**AA Sequence**

MNGTLDHPDQPDLDAIKMFVGQVPRTWSEKDLRELFEQYGAVYEINVLRDRSQNPP  
 QSKGCCFVTFYTRKAALEAQNALHNMKVLPGMHHPQMKPADSEKNNAVEDRKLFI  
 GMISKKCTENDIRVMFSSFGQIEECRILRGPDGLSRGCAFVFTTTRAMAQTAIKAMH  
 QAQTMEGCSSPMVVKFADTQKDKEQKRMAQQLQQMQQISAASVWGNLAGLNTL  
 GPQYLALYLQLLQQTASSGNLNTLSSLHPMGGLNAMQLQNLAALAAAASAAQNTPS  
 GTNALTTSSSPLSVLTSSGSSPSSSSNSVNPPIASLGALQTLGATAGLNVGSLAGM  
 AALNGGLGSSGLSNGTGSTMEALTQAYSGIQQYAAAALPTLYNQNLTTQQSIGAAG  
 SQKEGPEGANLFYHLPQEFQDQDLLQMFMPFGNVVSAKVFDKQTNLSKCFGFVS  
 YDNPVSAQAAIQSMNGFQIGMKRLKVQLKRSKNDSKPY

## GENE INFORMATION

**Gene Name** **CELF1 CUGBP, Elav-like family member 1 [ Homo sapiens ]**

**Official Symbol** **CELF1**

**Synonyms**

CELF1; CUGBP, Elav-like family member 1; CUG triplet repeat, RNA binding protein 1 , CUG triplet repeat, RNA binding protein 1 , CUGBP1; CUGBP Elav-like family member 1; bruno like 2; BRUNOL2; CUG RNA binding protein; CUG BP; CUGBP; EDEN BP; embryo deadenylation element binding protein; hNab50; NAB50; NAPOR; nuclear polyadenylated RNA binding protein; 50 kD; CELF-1; CUG-BP1; bruno-like 2; EDEN-BP homolog; bruno-like protein 2; CUG RNA-binding protein; deadenylation factor CUG-BP; RNA-binding protein BRUNOL-2; CUG-BP- and ETR-3-like factor 1; CUG triplet repeat RNA-binding protein 1; CUG triplet repeat, RNA binding protein 1; CUG triplet repeat, RNA-binding protein 1; 50 kDa nuclear polyadenylated RNA-binding protein; nuclear polyadenylated RNA-binding protein, 50-kD; embryo deadenylation element-binding protein homolog; CUG-BP; CUGBP1; EDEN-BP;

 Tel: 1-631-559-9269 1-516-512-3133

 Email: [info@creative-biomart.com](mailto:info@creative-biomart.com)  Fax: 1-631-938-8127

 45-1 Ramsey Road, Shirley, NY 11967, USA

**Gene ID** 10658

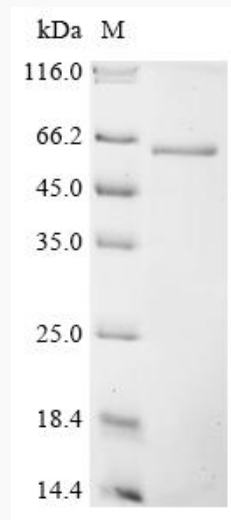
**mRNA Refseq** NM\_001025596


**Protein Refseq** NP\_001020767

**MIM** 601074

**UniProt ID** Q92879

**SDS-PAGE**



 Tel: 1-631-559-9269 1-516-512-3133

 Email: [info@creative-biomart.com](mailto:info@creative-biomart.com)  Fax: 1-631-938-8127

 45-1 Ramsey Road, Shirley, NY 11967, USA