

Recombinant Human CELF6 Protein, Myc/DDK-tagged, C13 and N15-labeled

Cat. No. CELF6-2205H Lot. No. (See product label)

SPECIFICATION

Product Overview	CELF6 MS Standard C13 and N15-labeled recombinant protein (NP_443072) with a C-terminal MYC/DDK tag, was expressed in HEK293 cells.
Species	Human
Source	HEK293
Description	Members of the CELF/BRUNOL protein family contain two N-terminal RNA recognition motif (RRM) domains, one C-terminal RRM domain, and a divergent segment of 160-230 aa between the second and third RRM domains. Members of this protein family regulate pre-mRNA alternative splicing and may also be involved in mRNA editing, and translation. Multiple alternatively spliced transcript variants encoding different isoforms have been identified in this gene.
Molecular Mass	50.5 kDa
AA Sequence	MTAAPGGSAQPAGPGPRLGFSTADSGVMSGLNPGPAVPMKDHDIAIKLFVGGQIPR GLDEQDLKPLFEFGRYIELTVLKDRLTGLHKGCAFLTYCARDSALKAQSALHEQKT LPGMNRPIQVKPAASEGRGEDRKLFGMLGKQQGEEDVRRLFQPFHIEECTVLR PDGTSKGCFAFVKFGSQGEAQAAIRGLHGSRTMAGASSLVVKLADTDRELRALRRM QQMAGHLGAFHPAPLPLGACGAYTTAILQHQALLAAQGPGLGPVAAVAAQMQH VAAFSLVAAPLLPAAAANSPPGSGPGTLPGLPAPIGVNGFGPLTPQTNGQPGSDTLY NNGLSPPYPAQSPGVADPLQQAYAGMHYAAAAYSAYAPVSTAFPQQPSALPQQQR

 Tel: 1-631-559-9269 1-516-512-3133

 Email: info@creative-biomart.com  Fax: 1-631-938-8127

 45-1 Ramsey Road, Shirley, NY 11967, USA

EGPEGCNLFYHLPQEFQDAELIQTFLPFGAVVSAKVFVDRATNQSKCFGVVSFDNP
TSAQTAIQAMNGFQIGMKRLKAQLKRPKDANRPYTRTRPLEQKLISEEDLAANDILDY
KDDDDKV

Purity > 80% as determined by SDS-PAGE and Coomassie blue staining

Stability Stable for 3 months from receipt of products under proper storage and handling conditions.

Storage Store at -80 centigrade. Avoid repeated freeze-thaw cycles.

Concentration 50 µg/mL as determined by BCA

Storage Buffer 100 mM glycine, 25 mM Tris-HCl, pH 7.3.

GENE INFORMATION

Gene Name CELF6 CUGBP Elav-like family member 6 [Homo sapiens (human)]

Official Symbol CELF6

Synonyms CELF6; CUGBP Elav-like family member 6; BRUNOL6; CUGBP Elav-like family member 6; Bruno -like 6, RNA binding protein; CELF-6; CUG-BP- and ETR-3-like factor 6; RNA-binding protein BRUNOL-6; bruno-like 6, RNA binding protein; bruno-like protein 6; EC 3.2.1.52

Gene ID 60677

mRNA Refseq NM_052840

Protein Refseq NP_443072

 Tel: 1-631-559-9269 1-516-512-3133

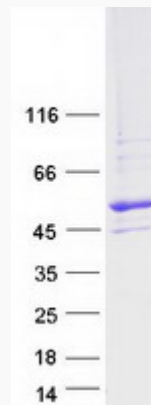
 Email: info@creative-biomart.com  Fax: 1-631-938-8127

 45-1 Ramsey Road, Shirley, NY 11967, USA

MIM 612681

UniProt ID Q96J87

SDS-PAGE



 Tel: 1-631-559-9269 1-516-512-3133

 Email: info@creative-biomart.com  Fax: 1-631-938-8127

 45-1 Ramsey Road, Shirley, NY 11967, USA