

## Recombinant Human CELSR3 Protein, GST-Tagged

**Cat. No.** CELSR3-1110H    **Lot. No.** (See product label)

### SPECIFICATION

<b>Product Overview</b>	Human CELSR3 partial ORF (NP_001398, 71 a.a. - 180 a.a.) recombinant protein with GST-tag at N-terminal.
<b>Species</b>	Human
<b>Source</b>	Wheat Germ
<b>Description</b>	This gene belongs to the flamingo subfamily, which is included in the cadherin superfamily. The flamingo cadherins consist of nonclassic-type cadherins that do not interact with catenins. They are plasma membrane proteins containing seven epidermal growth factor-like repeats, nine cadherin domains and two laminin A G-type repeats in their ectodomain. They also have seven transmembrane domains, a characteristic feature of their subfamily. The encoded protein may be involved in the regulation of contact-dependent neurite growth and may play a role in tumor formation. [provided by RefSeq, Jun 2013]
<b>Molecular Mass</b>	37.84 kDa
<b>AA Sequence</b>	REDGGPGLGVREPIFVGLRGRRRQSARNRSGPPEQPNEELGIEHGVQPLGSRERET GQGPGSVLYWRPEVSSCGRTGPLQRGSLSPGALSSGVPVGSNGSSPLPSDFLIRHH
<b>Applications</b>	Enzyme-linked Immunoabsorbent Assay Western Blot (Recombinant protein) Antibody Production Protein Array

 Tel: 1-631-559-9269    1-516-512-3133

 Email: [info@creative-biomart.com](mailto:info@creative-biomart.com)     Fax: 1-631-938-8127

 45-1 Ramsey Road, Shirley, NY 11967, USA

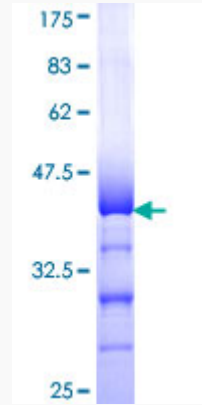
<b>Storage</b>	Store at -80 centigrade. Aliquot to avoid repeated freezing and thawing.
<b>Storage Buffer</b>	50 mM Tris-HCl, 10 mM reduced Glutathione, pH=8.0 in the elution buffer.
<b>GENE INFORMATION</b>	
<b>Gene Name</b>	CELSR3 cadherin, EGF LAG seven-pass G-type receptor 3 (flamingo homolog, Drosophila) [ Homo sapiens ]
<b>Official Symbol</b>	CELSR3
<b>Synonyms</b>	CELSR3; cadherin, EGF LAG seven-pass G-type receptor 3 (flamingo homolog, Drosophila); cadherin EGF LAG seven pass G type receptor 3, flamingo (Drosophila) homolog, EGFL1; cadherin EGF LAG seven-pass G-type receptor 3; CDHF11; FMI1; HFMI1; MEGF2; anchor protein; EGF-like protein 1; flamingo homolog 1; cadherin family member 11; EGF-like-domain, multiple 1; multiple EGF-like domains 2; epidermal growth factor-like 1; multiple EGF-like domains protein 2; epidermal growth factor-like protein 1; multiple epidermal growth factor-like domains protein 2; EGFL1; RESDA1;
<b>Gene ID</b>	1951
<b>mRNA Refseq</b>	NM_001407
<b>Protein Refseq</b>	NP_001398
<b>MIM</b>	604264
<b>UniProt ID</b>	Q9NYQ7

 Tel: 1-631-559-9269 1-516-512-3133

 Email: [info@creative-biomart.com](mailto:info@creative-biomart.com)  Fax: 1-631-938-8127

 45-1 Ramsey Road, Shirley, NY 11967, USA

**Quality Control  
Testing**



12.5% SDS-PAGE Stained with Coomassie Blue.

 Tel: 1-631-559-9269 1-516-512-3133

 Email: [info@creative-biomart.com](mailto:info@creative-biomart.com)  Fax: 1-631-938-8127

 45-1 Ramsey Road, Shirley, NY 11967, USA