

Recombinant Mouse CELA2A Protein (1-134 aa), His-tagged

Cat. No. CENPA-1359M Lot. No. (See product label)

SPECIFICATION

Product Overview	Recombinant Mouse CELA2A Protein (1-134 aa) is produced by Yeast expression system. This protein is fused with a 6xHis tag at the N-terminal. Protein Description: Full Length.
Species	Mouse
Source	Yeast
ProteinLength	1-134 aa
Description	Histone H3-like variant which exclusively replaces conventional H3 in the nucleosome core of centromeric chromatin at the inner plate of the kinetochore. Required for recruitment and assembly of kinetochore proteins, mitotic progression and chromosome segregation. May serve as an epigenetic mark that propagates centromere identity through replication and cell division. The CENPA-H4 heterotetramer can bind DNA by itself (in vitro).
Form	Tris-based buffer, 50% glycerol
Molecular Mass	17.5 kDa
AA Sequence	MGPRRKPTPRRRPSSPAPGPSRQSSSVGSQTLRRRQKFMWLKEIKTLQKSTDLL FRKKPFSMVVREICEKFSRGVDFWWQAQALLALQEAAEAFLIHLFEDAYLLSLHAGR VTLFPKDIQLTRRIRGFEGGLP

 Tel: 1-631-559-9269 1-516-512-3133

 Email: info@creative-biomart.com  Fax: 1-631-938-8127

 45-1 Ramsey Road, Shirley, NY 11967, USA

Purity	> 90% as determined by SDS-PAGE.
Notes	Repeated freezing and thawing is not recommended. Store working aliquots at 4 centigrade for up to one week.
Storage	The shelf life is related to many factors, storage state, buffer ingredients, storage temperature and the stability of the protein itself. Generally, the shelf life of liquid form is 6 months at -20 centigrade/-80 centigrade. The shelf life of lyophilized form is 12 months at -20 centigrade/-80 centigrade.
Concentration	A hardcopy of COA with reconstitution instruction is sent along with the products. Please refer to it for detailed information.

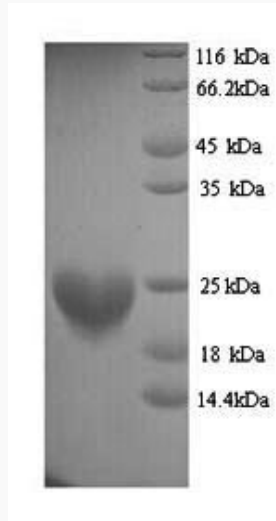
GENE INFORMATION

Gene Name	Cenpa centromere protein A [Mus musculus]
Official Symbol	CENPA
Synonyms	CENPA; centrosomin A; Cenp-A;
Gene ID	12615
mRNA Refseq	NM_007681
Protein Refseq	NP_031707
UniProt ID	O35216

 Tel: 1-631-559-9269 1-516-512-3133

 Email: info@creative-biomart.com  Fax: 1-631-938-8127

 45-1 Ramsey Road, Shirley, NY 11967, USA



(Tris-Glycine gel) Discontinuous SDS-PAGE (reduced) with 5% enrichment gel and 15% separation gel.

 Tel: 1-631-559-9269 1-516-512-3133

 Email: info@creative-biomart.com  Fax: 1-631-938-8127

 45-1 Ramsey Road, Shirley, NY 11967, USA