

Recombinant Human CENPA protein, GST-tagged

Cat. No. CENPA-301526H Lot. No. (See product label)

SPECIFICATION

Product Overview	Recombinant Human CENPA protein(1-59 aa), fused with N-terminal GST tag, was expressed in E.coli.
Species	Human
Source	E.coli
ProteinLength	1-59 aa
Form	The purified protein was lyophilized from sterile phosphate-buffered saline (PBS: 58 mM Na ₂ HPO ₄ , 17 mM NaH ₂ PO ₄ , 68 mM NaCl, pH 8.0). Prior to lyophilization, 5% (w/v) trehalose and 5% (w/v) mannitol were incorporated as cryoprotective excipients. The protein was eluted with a buffer containing 100 mM reduced glutathione (GSH).
AASequence	MGPRRRSRKPEAPRRRSPSPPTPTPGPSRRGPSLGASSHQHSRRRQGWLKEIRKLQ KSTH
Purity	85%, by SDS-PAGE with Coomassie Brilliant Blue staining.
Storage	Store at 2-8°C for 1-2 weeks. Aliquot and store at -20°C to -80°C for up to 3 months, reconstitution with sterile water and addition of an equal volume of glycerol. Avoid repeat freeze-thaw cycles.
Reconstitution	Dissolve the product in 200

 Tel: 1-631-559-9269 1-516-512-3133

 Email: info@creative-biomart.com  Fax: 1-631-938-8127

 45-1 Ramsey Road, Shirley, NY 11967, USA

µl sterile water to achieve a working concentration of 0.25 g/µl. If experimental compatibility allows, mix the aqueous solution with an equal volume of glycerol (1:1 ratio) after initial reconstitution.

GENE INFORMATION

Gene Name	CENPA centromere protein A [Homo sapiens]
Official Symbol	CENPA
Synonyms	CENPA; centromere protein A; centromere protein A (17kD) , centromere protein A, 17kDa; histone H3-like centromeric protein A; CenH3; CENP A; centromere specific histone; histone H3 like centromeric protein A; centromere autoantigen A; centromere protein A, 17kDa; centromere-specific histone; CENP-A;
Gene ID	1058
mRNA Refseq	NM_001042426
Protein Refseq	NP_001035891
MIM	117139
UniProt ID	P49450

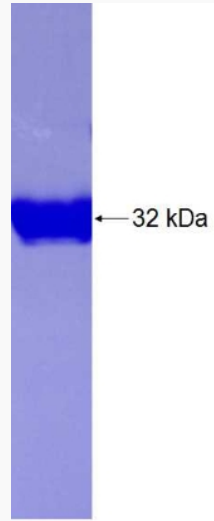
 Tel: 1-631-559-9269 1-516-512-3133

 Email: info@creative-biomart.com  Fax: 1-631-938-8127

 45-1 Ramsey Road, Shirley, NY 11967, USA



SDS-PAGE



Tel: 1-631-559-9269 1-516-512-3133

Email: info@creative-biomart.com Fax: 1-631-938-8127

45-1 Ramsey Road, Shirley, NY 11967, USA