

Recombinant Human CENPI Protein, GST-tagged

Cat. No. CENPI-4520H Lot. No. (See product label)

SPECIFICATION

Product Overview	Human FSHPRH1 full-length ORF (AAH12462.1, 1 a.a. - 522 a.a.) recombinant protein with GST-tag at N-terminal.
Species	Human
Source	Wheat Germ
Description	The product of this gene is involved in the response of gonadal tissues to follicle-stimulating hormone. This gene is also a potential candidate for human X-linked disorders of gonadal development and gametogenesis. [provided by RefSeq]
Molecular Mass	86.2 kDa
AA Sequence	MSPQKRVKNVQAQNRTSQGSSSFQTTL SAW KVKQDPSNSKNISKHGGQNNPVGDI EHADDQAEEDALQMAVGYFEKGP IKASQ NKDKTLEKHLKTVENVAVKNGLASEEIDI LLNIALSGKFGNAVNTRILKCMIPATVISED SVV KAVSWLCVKGKCSGSTKVLFYRWLV AMFDFIDRKEQINLLYGFFASLQDDALCPYVCHLLYLLTKKENVKPFRVRKLLDLQA KMGMQPHLQALLSLYKFFAPALISVSLPVRKKIYFKNSEN LWKT ALLAVKQRNRGPS PEPLKMLGPANVRPLKRKWNLSLVIPVLN SSSYT KECGKKEMSLSDCLNRS GSF PL EQLQSF PQL LQNIHCLELPSQMGSVLNNSLL LHY INCVRDEPVLLRFYYWLSQTLQE ECIWYKVNNYEHGKEFTN FLD TIIRAECFLQEGFYSCEAF LYK SLPLWDGLCCRSQF LQLVSWIPFSS FSE VKPLLFDHLAQLFFTSTIYFKCSVLQSLKELLQNWLLWLSMDIH MKPVTNSPL
Applications	Enzyme-linked Immunoabsorbent Assay

Tel: 1-631-559-9269 1-516-512-3133

Email: info@creative-biomart.com Fax: 1-631-938-8127

45-1 Ramsey Road, Shirley, NY 11967, USA

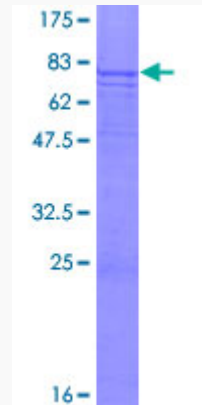
	Western Blot (Recombinant protein) Antibody Production Protein Array
Notes	Best use within three months from the date of receipt of this protein.
Storage	Store at -80 centigrade. Aliquot to avoid repeated freezing and thawing.
Storage Buffer	50 mM Tris-HCl, 10 mM reduced Glutathione, pH=8.0 in the elution buffer.
GENE INFORMATION	
Gene Name	CENPI centromere protein I [Homo sapiens]
Official Symbol	CENPI
Synonyms	CENPI; centromere protein I; FSH primary response (LRPR1 homolog, rat) 1, FSH primary response (LRPR1, rat) homolog 1, FSHPRH1; CENP I; LRPR1; Mis6; FSH primary response 1; FSH primary response protein 1; leucine-rich primary response protein 1; interphase centromere complex protein 19; follicle-stimulating hormone primary response protein; CENP-I; FSHPRH1;
Gene ID	2491
mRNA Refseq	NM_006733
Protein Refseq	NP_006724
MIM	300065
UniProt ID	Q92674

 Tel: 1-631-559-9269 1-516-512-3133

 Email: info@creative-biomart.com  Fax: 1-631-938-8127

 45-1 Ramsey Road, Shirley, NY 11967, USA

**Quality Control
Testing**



12.5% SDS-PAGE Stained with Coomassie Blue.

 Tel: 1-631-559-9269 1-516-512-3133

 Email: info@creative-biomart.com  Fax: 1-631-938-8127

 45-1 Ramsey Road, Shirley, NY 11967, USA