

Recombinant Human CENPJ Protein, GST-Tagged

Cat. No. CENPJ-1118H Lot. No. (See product label)

SPECIFICATION

Product Overview	Human CENPJ full-length ORF (AAH24209.3, 1 a.a. - 372 a.a.) recombinant protein with GST-tag at N-terminal.
Species	Human
Source	Wheat Germ
Description	This gene encodes a protein that belongs to the centromere protein family. During cell division, this protein plays a structural role in the maintenance of centrosome integrity and normal spindle morphology, and it is involved in microtubule disassembly at the centrosome. This protein can function as a transcriptional coactivator in the Stat5 signaling pathway, and also as a coactivator of NF-kappaB-mediated transcription, likely via its interaction with the coactivator p300/CREB-binding protein. Mutations in this gene are associated with primary autosomal recessive microcephaly, a disorder characterized by severely reduced brain size and mental retardation. Alternatively spliced transcript variants have been found for this gene. [provided by RefSeq, Apr 2012]
Molecular Mass	69.6 kDa
AA Sequence	MRKLQKERKVFKEYTTAARTFPDKKEREEIQLKQIADLREDLKRKETKWSSTHSR LRSQIQMLVRENTDLREEIKVMERFRLDAWKRAEAIESSLEVEKKDKLANTSVRFQN SQISSGTQVEKYKKNYLPMQGNPPRRSKSAPPRDLGNLDKGQAASPREPLEPLNFP DPEYKEEEEDQDIQGEISHPDGKVEKVYKNGCRVILFPNGTRKEVSADGKTITVTFF

 Tel: 1-631-559-9269 1-516-512-3133

 Email: info@creative-biomart.com  Fax: 1-631-938-8127

 45-1 Ramsey Road, Shirley, NY 11967, USA

NGDVKQVMPDQRVIYYYYAAAQTTHTTTYPEGLEVLHFSSGQIEKHYPDGRKEITFPDQ
 TVKNLFPDGGQEESIFPDGTIVRVQRDGNKLIEFNNGQRELHTAQFKRREYPDGTVKT
 VYANGHQETKYRSGRIRVKDKEGNVLMDEL

Applications	Enzyme-linked Immunoabsorbent Assay Western Blot (Recombinant protein) Antibody Production Protein Array
Storage	Store at -80 centigrade. Aliquot to avoid repeated freezing and thawing.
Storage Buffer	50 mM Tris-HCl, 10 mM reduced Glutathione, pH=8.0 in the elution buffer.

GENE INFORMATION

Gene Name	CENPJ centromere protein J [Homo sapiens]
Official Symbol	CENPJ
Synonyms	CENPJ; centromere protein J; MCPH6, microcephaly, primary autosomal recessive 6; BM032; CPAP; LAP; LIP1; Sas 4; SASS4; SCKL4; LAG-3-associated protein; LYST-interacting protein 1; LYST-interacting protein LIP1; LYST-interacting protein LIP7; centrosomal P4.1-associated protein; MCPH6; Sas-4; CENP-J; MGC131581; MGC131582; MGC142222; MGC142224;
Gene ID	55835
mRNA Refseq	NM_018451
Protein Refseq	NP_060921

 Tel: 1-631-559-9269 1-516-512-3133

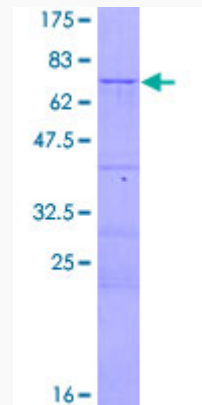
 Email: info@creative-biomart.com  Fax: 1-631-938-8127

 45-1 Ramsey Road, Shirley, NY 11967, USA

MIM 609279

UniProt ID Q9HC77

Quality Control
Testing



12.5% SDS-PAGE Stained with Coomassie Blue.

Tel: 1-631-559-9269 1-516-512-3133

Email: info@creative-biomart.com Fax: 1-631-938-8127

45-1 Ramsey Road, Shirley, NY 11967, USA