

Recombinant Human CENPL Protein, GST-Tagged

Cat. No. CENPL-1122H Lot. No. (See product label)

SPECIFICATION

| | |
|-------------------------|---|
| Product Overview | Human CENPL full-length ORF (AAH33154.1, 1 a.a. - 390 a.a.) recombinant protein with GST-tag at N-terminal. |
| Species | Human |
| Source | Wheat Germ |
| Description | CENPL is a subunit of a CENPH (MIM 605607)-CENPI (MIM 300065)-associated centromeric complex that targets CENPA (MIM 117139) to centromeres and is required for proper kinetochore function and mitotic progression (Okada et al., 2006) [PubMed 16622420].[supplied by OMIM, Mar 2008] |
| Molecular Mass | 70.1 kDa |
| AA Sequence | MDSYSAPESTPSASSRPEDYFIGATPLQKRLESVRKQSSFILTPPRRKIPQCSQLQE DVDPQKVAFLHKKWTLYSLTPLYKFSYSNLKEYSRLLNAFIVAEEKQKGLAVEVGED FNIKVFSTLLGMKGTQRDPEAFLVQGLILSPRLEYSGTILVDCNLCLLGSSDPSTLAF QVAGTAGACHHTRIVSKSQLPSENREGKVLWTGWFCVFGDSLLETVSEDFTCLPL FLANGAESNTAIIGTWFQKTFDCYFSPAINAFNLSWMAAMWTACKMDHYVATTEFL WSVPCSPQSLDISFAIHPEDAKALWDSVHKTPGEVTQEEVDLFMDCLYSHFHRHFKI HLSATRLVRVSTSVASAHTDGKIKILCHKYLIGVLAYLTELAIFQIE |
| Applications | Enzyme-linked Immunoabsorbent Assay Western Blot (Recombinant protein) Antibody Production |

Tel: 1-631-559-9269 1-516-512-3133

Email: info@creative-biomart.com Fax: 1-631-938-8127

45-1 Ramsey Road, Shirley, NY 11967, USA

Protein Array

| | |
|-----------------------|--|
| Storage | Store at -80 centigrade. Aliquot to avoid repeated freezing and thawing. |
| Storage Buffer | 50 mM Tris-HCl, 10 mM reduced Glutathione, pH=8.0 in the elution buffer. |

GENE INFORMATION

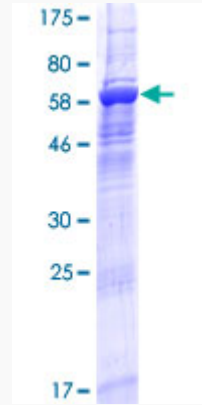
| | |
|------------------------|---|
| Gene Name | CENPL centromere protein L [Homo sapiens] |
| Official Symbol | CENPL |
| Synonyms | CENP-L; C1orf155; dJ383J4.3; RP3-383J4.1 |
| Gene ID | 91687 |
| mRNA Refseq | NM_033319 |
| Protein Refseq | NP_201576 |
| MIM | 611503 |
| UniProt ID | Q8N0S6 |

 Tel: 1-631-559-9269 1-516-512-3133

 Email: info@creative-biomart.com  Fax: 1-631-938-8127

 45-1 Ramsey Road, Shirley, NY 11967, USA

**Quality Control
Testing**



12.5% SDS-PAGE Stained with Coomassie Blue.

 Tel: 1-631-559-9269 1-516-512-3133

 Email: info@creative-biomart.com  Fax: 1-631-938-8127

 45-1 Ramsey Road, Shirley, NY 11967, USA