

Recombinant Human CENPL Protein, Myc/DDK-tagged, C13 and N15-labeled

Cat. No. CENPL-3769H Lot. No. (See product label)

SPECIFICATION

Product Overview	CENPL MS Standard C13 and N15-labeled recombinant protein (NP_201576) with a C-terminal MYC/DDK tag, was expressed in HEK293 cells.
Species	Human
Source	HEK293
Description	CENPL is a subunit of a CENPH -CENPI -associated centromeric complex that targets CENPA to centromeres and is required for proper kinetochore function and mitotic progression.
Molecular Mass	39 kDa
AA Sequence	MDSYSAPESTPSASSRPEDYFIGATPLQKRLESVRKQSSFILTPRRRKIPQCSQLQE DVDPQKVAFLHKKWTLYSLTPLYKFSYSNLKEYSRLLNAFIVAEEKQKGLAVEVGED FNIKVIFSTLLGMKGTQRDPEAFLVQIVSKSQLPSENREGKVLWTGWFCVFGDSSL ETVSEDFTCLPLFLANGAESNTAIGTWQKTFDCYFSPAINAFNLSWMAAMWTAC KMDHYVATTEFLWSVPCSPQSLDISFAIHPEDAKALWDSVHKTPGEVTQEEVDLFM DCLYSHFHRHFKIHLSATRLVRVSTSVASAHTDGKIKILCHKYLIGVLAYLTELAIFQIE TRTRPLEQKLISEEDLAANDILDYKDDDDKV
Purity	> 80% as determined by SDS-PAGE and Coomassie blue staining
Stability	Stable for 3 months from receipt of products under proper storage and handling

 Tel: 1-631-559-9269 1-516-512-3133

 Email: info@creative-biomart.com  Fax: 1-631-938-8127

 45-1 Ramsey Road, Shirley, NY 11967, USA

conditions.

Storage Store at -80 centigrade. Avoid repeated freeze-thaw cycles.

Concentration 50 µg/mL as determined by BCA

Storage Buffer 100 mM glycine, 25 mM Tris-HCl, pH 7.3.

GENE INFORMATION

Gene Name CENPL centromere protein L [Homo sapiens (human)]

Official Symbol CENPL

Synonyms CENPL; centromere protein L; CENP-L; C1orf155; dJ383J4.3; centromere protein L; interphase centromere complex protein 33

Gene ID 91687

mRNA Refseq NM_033319

Protein Refseq NP_201576

MIM 611503

UniProt ID Q8N0S6

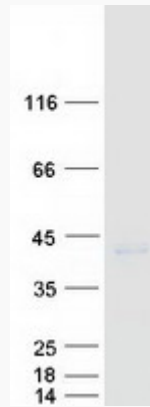
 Tel: 1-631-559-9269 1-516-512-3133

 Email: info@creative-biomart.com  Fax: 1-631-938-8127

 45-1 Ramsey Road, Shirley, NY 11967, USA



SDS-PAGE



Tel: 1-631-559-9269 1-516-512-3133

Email: info@creative-biomart.com Fax: 1-631-938-8127

45-1 Ramsey Road, Shirley, NY 11967, USA