

# Recombinant Human CENPM Protein, Myc/DDK-tagged, C13 and N15-labeled

**Cat. No.** CENPM-1418H    **Lot. No.** (See product label)

## SPECIFICATION

<b>Product Overview</b>	CENPM MS Standard C13 and N15-labeled recombinant protein (NP_076958) with a C-terminal MYC/DDK tag, was expressed in HEK293 cells.
<b>Species</b>	Human
<b>Source</b>	HEK293
<b>Description</b>	The protein encoded by this gene is an inner protein of the kinetochore, the multi-protein complex that binds spindle microtubules to regulate chromosome segregation during cell division. It belongs to the constitutive centromere-associated network protein group, whose members interact with outer kinetochore proteins and help to maintain centromere identity at each cell division cycle. The protein is structurally related to GTPases but cannot bind guanosine triphosphate. A point mutation that affects interaction with another constitutive centromere-associated network protein, CENP-I, impairs kinetochore assembly and chromosome alignment, suggesting that it is required for kinetochore formation. Alternative splicing results in multiple transcript variants.
<b>Molecular Mass</b>	19.7 kDa
<b>AA Sequence</b>	MSVLRPLDKLPGLNTATILLVGTEDEALLQQLADSMKEDCASELKVHLAKSLPLPSSV NRPRIDLIVFVNLHLSKYSLQNTTEESLRHVVDASFFLGKVCFLATGAGRESHCSIHRT VVKLAHTYQSPLLYCDLEVEGFRATMAQRLVRVLQICAGHVPGVSA LNLLSLLRSSE

 Tel: 1-631-559-9269    1-516-512-3133

 Email: [info@creative-biomart.com](mailto:info@creative-biomart.com)     Fax: 1-631-938-8127

 45-1 Ramsey Road, Shirley, NY 11967, USA

GPSLEDLTRTRPLEQKLISEEDLAANDILDYKDDDDKV

**Purity** > 80% as determined by SDS-PAGE and Coomassie blue staining

**Stability** Stable for 3 months from receipt of products under proper storage and handling conditions.

**Storage** Store at -80 centigrade. Avoid repeated freeze-thaw cycles.

**Concentration** 50 µg/mL as determined by BCA

**Storage Buffer** 100 mM glycine, 25 mM Tris-HCl, pH 7.3.

## GENE INFORMATION

**Gene Name** CENPM centromere protein M [ Homo sapiens (human) ]

**Official Symbol** CENPM

**Synonyms** CENPM; centromere protein M; C22orf18, chromosome 22 open reading frame 18; CENP M; MGC861; Pane1; interphase centromere complex protein 39; proliferation associated nuclear element 1; proliferation-associated nuclear element protein 1; PANE1; CENP-M; C22orf18; bK250D10.2;

**Gene ID** 79019

**mRNA Refseq** NM\_024053

**Protein Refseq** NP\_076958

**MIM** 610152

 Tel: 1-631-559-9269 1-516-512-3133

 Email: [info@creative-biomart.com](mailto:info@creative-biomart.com)  Fax: 1-631-938-8127

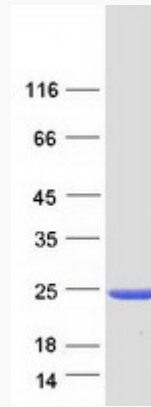
 45-1 Ramsey Road, Shirley, NY 11967, USA



UniProt ID

Q9NSP4

SDS-PAGE



Tel: 1-631-559-9269 1-516-512-3133

Email: [info@creative-biomart.com](mailto:info@creative-biomart.com) Fax: 1-631-938-8127

45-1 Ramsey Road, Shirley, NY 11967, USA