

## Recombinant Human CENPM Protein, His-tagged

Cat. No. CENPM-19H    Lot. No. (See product label)

### SPECIFICATION

<b>Product Overview</b>	Recombinant human CENPM protein (1-180aa, 203aa), fused to His-tag at N-terminus, was expressed in E. coli and purified by using conventional chromatography techniques.
<b>Species</b>	Human
<b>Source</b>	E.coli
<b>ProteinLength</b>	1-180
<b>Description</b>	The protein encoded by this gene is an inner protein of the kinetochore, the multi-protein complex that binds spindle microtubules to regulate chromosome segregation during cell division. It belongs to the constitutive centromere-associated network protein group, whose members interact with outer kinetochore proteins and help to maintain centromere identity at each cell division cycle. The protein is structurally related to GTPases but cannot bind guanosine triphosphate. A point mutation that affects interaction with another constitutive centromere-associated network protein, CENP-I, impairs kinetochore assembly and chromosome alignment, suggesting that it is required for kinetochore formation. Alternative splicing results in multiple transcript variants.
<b>Form</b>	Liquid
<b>Molecular Mass</b>	22.1 kDa

 Tel: 1-631-559-9269    1-516-512-3133

 Email: [info@creative-biomart.com](mailto:info@creative-biomart.com)     Fax: 1-631-938-8127

 45-1 Ramsey Road, Shirley, NY 11967, USA

<b>AA Sequence</b>	MSVLRPLDKLPGLNTATILLVGTEDEALLQQLADSMKEDCASELKVHLAKSLPLPSSV NRPRIDLIVFVNLHSHKYSLQNTTEESLRHVVDASFFLGKVCFLATGAGRESHCSIHRHT VVKLAHTYQSPLLYCDLEVEGFRATMAQRLVRVLQICAGHVPGVSALNLLSLLRSSE GPSLEDL
<b>Purity</b>	> 85% by SDS-PAGE
<b>Applications</b>	SDS-PAGE
<b>Storage</b>	Can be stored at 2 to 8 centigrade for 1 week. For long term storage, aliquot and store at -20 to -80 centigrade. Avoid repeated freezing and thawing cycles.
<b>Concentration</b>	0.25 mg/mL (determined by Bradford assay)
<b>Storage Buffer</b>	20 mM Tris-HCl buffer (pH 8.0) containing 0.15M NaCl, 30% glycerol, 1mM DTT

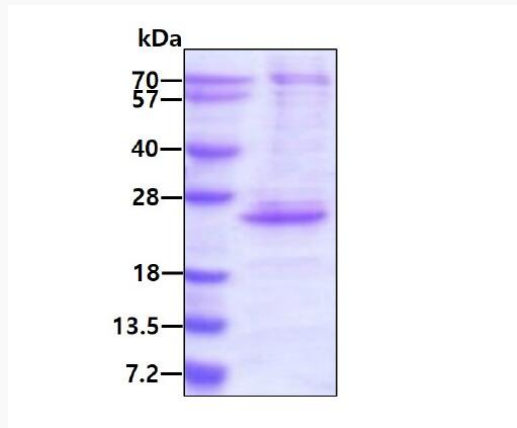
## GENE INFORMATION

<b>Gene Name</b>	CENPM centromere protein M [ Homo sapiens (human) ]
<b>Official Symbol</b>	CENPM
<b>Synonyms</b>	CENPM; centromere protein M; PANE1; CENP-M; C22orf18; centromere protein M; interphase centromere complex protein 39; proliferation-associated nuclear element protein 1
<b>Gene ID</b>	79019
<b>mRNA Refseq</b>	NM_024053
<b>Protein Refseq</b>	NP_076958

 Tel: 1-631-559-9269 1-516-512-3133

 Email: [info@creative-biomart.com](mailto:info@creative-biomart.com)  Fax: 1-631-938-8127

 45-1 Ramsey Road, Shirley, NY 11967, USA

**MIM** 610152**UniProt ID** Q9NSP4**SDS-PAGE**

3  $\mu$ g by SDS-PAGE under reducing condition and visualized by coomassie blue stain.

 Tel: 1-631-559-9269 1-516-512-3133 Email: [info@creative-biomart.com](mailto:info@creative-biomart.com)  Fax: 1-631-938-8127 45-1 Ramsey Road, Shirley, NY 11967, USA