

Recombinant Human CENPN Protein, GST-tagged

Cat. No. CENPN-254H Lot. No. (See product label)

SPECIFICATION

Product Overview	Human BM039 full-length ORF (AAH07334, 1 a.a. - 204 a.a.) recombinant protein with GST-tag at N-terminal.
Species	Human
Source	Wheat Germ
Description	The centromere is a specialized chromatin domain, present throughout the cell cycle, that acts as a platform on which the transient assembly of the kinetochore occurs during mitosis. All active centromeres are characterized by the presence of long arrays of nucleosomes in which CENPA (MIM 117139) replaces histone H3 (see MIM 601128). CENPN is an additional factor required for centromere assembly (Foltz et al., 2006 [PubMed 16622419]).
Form	50 mM Tris-HCl, 10 mM reduced Glutathione, pH=8.0 in the elution buffer.
Molecular Mass	48.18 kDa
AA Sequence	MDETVAEFIKRILKIPMNELTTILKAWDFLSENQLQTVNFRQRKESVVQHLIHLCEEK RASISDAALLDIYMQFHQHQK/VWDV/FQMSKGPGEVDLFDKQFKNSFKKILQRAL KNVTVSFRETEENAVWIRIAWGTQYTKPNQYKPTYVVVYYSQTPYAFTSSSMLRRNT PLLGQELEATGKIYLRQEEIILDITEMKKACN
Notes	Best use within three months from the date of receipt of this protein.

 Tel: 1-631-559-9269 1-516-512-3133

 Email: info@creative-biomart.com  Fax: 1-631-938-8127

 45-1 Ramsey Road, Shirley, NY 11967, USA

Storage Store at -80 centigrade. Aliquot to avoid repeated freezing and thawing.

Storage Buffer 50 mM Tris-HCl, 10 mM reduced Glutathione, pH=8.0 in the elution buffer.

GENE INFORMATION

Gene Name [CENPN centromere protein N \[Homo sapiens \]](#)

Official Symbol [CENPN](#)

Synonyms CENPN; centromere protein N; C16orf60, chromosome 16 open reading frame 60; BM039; FLJ13607; FLJ22660; interphase centromere complex protein 32; CENP-N; C16orf60;

Gene ID [55839](#)

mRNA Refseq [NM_001100624](#)

Protein Refseq [NP_001094094](#)

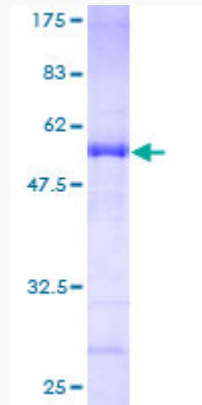
MIM [611509](#)

UniProt ID [Q96H22](#)

 Tel: 1-631-559-9269 1-516-512-3133

 Email: info@creative-biomart.com  Fax: 1-631-938-8127

 45-1 Ramsey Road, Shirley, NY 11967, USA



Tel: 1-631-559-9269 1-516-512-3133

Email: info@creative-biomart.com Fax: 1-631-938-8127

45-1 Ramsey Road, Shirley, NY 11967, USA