

Recombinant Human CENPP Protein, GST-Tagged

Cat. No. CENPP-1124H Lot. No. (See product label)

SPECIFICATION

Product Overview	Human CENPP full-length ORF (NP_001012267.1, 1 a.a. - 288 a.a.) recombinant protein with GST-tag at N-terminal.
Species	Human
Source	Wheat Germ
Description	CENPP is a subunit of a CENPH (MIM 605607)-CENPI (MIM 300065)-associated centromeric complex that targets CENPA (MIM 117139) to centromeres and is required for proper kinetochore function and mitotic progression (Okada et al., 2006 [PubMed 16622420]).[supplied by OMIM, Mar 2008]
Molecular Mass	59.6 kDa
AA Sequence	MDAELAEVRALQAEIAALRRACEDPPAPWEEKSRVQKSFQAIHQFNLEGWKSSKDL KNQLGHLESELSFLSTLTGINIRNHSKQTEDLTSTEMTEKSIRKVLQRHRLSGNCHMV TFQLEFQILEIQNKERLSSAVTDLNIIMEPTCESELSEFVSRAEERKDLFMFFRSLHFF VEWFEYRKRTFKHLKEKYPDAVYLSEGPSSCSMGIRSASRPGFELVIVWRIQIDEDG KVFPKLDLLTKVPQRALELDKNRAIETAPLSFRTLVLGLLGIEAALES LIKSLCAEENN
Applications	Enzyme-linked Immunoabsorbent Assay Western Blot (Recombinant protein) Antibody Production Protein Array

 Tel: 1-631-559-9269 1-516-512-3133

 Email: info@creative-biomart.com  Fax: 1-631-938-8127

 45-1 Ramsey Road, Shirley, NY 11967, USA

Storage Store at -80 centigrade. Aliquot to avoid repeated freezing and thawing.

Storage Buffer 50 mM Tris-HCl, 10 mM reduced Glutathione, pH=8.0 in the elution buffer.

GENE INFORMATION

Gene Name CENPP centromere protein P [Homo sapiens]

Official Symbol CENPP

Synonyms CENPP; centromere protein P; CENP P; RP11 19J3.3; CENP-P; RP11-19J3.3; FLJ33928;

Gene ID 401541

mRNA Refseq NM_001012267

Protein Refseq NP_001012267

MIM 611505

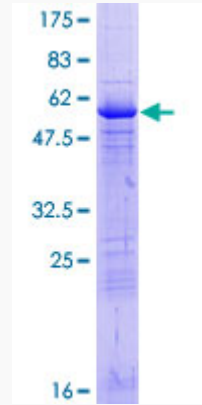
UniProt ID Q6IPU0

 Tel: 1-631-559-9269 1-516-512-3133

 Email: info@creative-biomart.com  Fax: 1-631-938-8127

 45-1 Ramsey Road, Shirley, NY 11967, USA

**Quality Control
Testing**



12.5% SDS-PAGE Stained with Coomassie Blue.

 Tel: 1-631-559-9269 1-516-512-3133

 Email: info@creative-biomart.com  Fax: 1-631-938-8127

 45-1 Ramsey Road, Shirley, NY 11967, USA