

Recombinant Human CENPQ Protein, GST-Tagged

Cat. No. CENPQ-1126H **Lot. No.** (See product label)

SPECIFICATION

Product Overview	Human C6orf139 full-length ORF (AAH16279.2, 1 a.a. - 268 a.a.) recombinant protein with GST-tag at N-terminal.
Species	Human
Source	Wheat Germ
Description	CENPQ is a subunit of a CENPH (MIM 605607)-CENPI (MIM 300065)-associated centromeric complex that targets CENPA (MIM 117139) to centromeres and is required for proper kinetochore function and mitotic progression (Okada et al., 2006 [PubMed 16622420]).[supplied by OMIM, Mar 2008]
Molecular Mass	55.22 kDa
AA Sequence	MSGKANASKKNAQQLKRNPKRKKDNEEVVLSenkvrntvkkknknhlkdlSSEGQT KHTNLKHGKTAASKRKTWQPLSKSTRDHLQTMMEsvimtilsnsikekeeIQYHLNFL KKRLLQQCETLKVPPKkMEDLTNVSSLLNmerardkaneeGLALLQEEIDkMVETTE LMTGNIQSLKNKIqILASEVEEEEERVKQMHQINSSGVLslPELSQKTLKAPTlQKEIL ALIPNQNALLKDLdILHNSSQMkSMSTFIEEAYKkLDAS
Applications	Enzyme-linked Immunoabsorbent Assay Western Blot (Recombinant protein) Antibody Production Protein Array

 Tel: 1-631-559-9269 1-516-512-3133

 Email: info@creative-biomart.com  Fax: 1-631-938-8127

 45-1 Ramsey Road, Shirley, NY 11967, USA

Storage Store at -80 centigrade. Aliquot to avoid repeated freezing and thawing.

Storage Buffer 50 mM Tris-HCl, 10 mM reduced Glutathione, pH=8.0 in the elution buffer.

GENE INFORMATION

Gene Name CENPQ centromere protein Q [Homo sapiens]

Official Symbol CENPQ

Synonyms CENPQ; centromere protein Q; C6orf139, chromosome 6 open reading frame 139; CENP Q; FLJ10545; CENP-Q; C6orf139;

Gene ID 55166

mRNA Refseq NM_018132

Protein Refseq NP_060602

MIM 611506

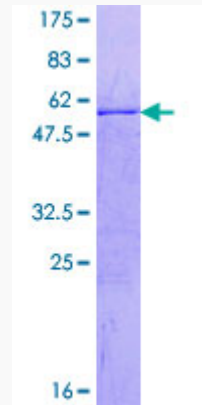
UniProt ID Q7L2Z9

 Tel: 1-631-559-9269 1-516-512-3133

 Email: info@creative-biomart.com  Fax: 1-631-938-8127

 45-1 Ramsey Road, Shirley, NY 11967, USA

**Quality Control
Testing**



12.5% SDS-PAGE Stained with Coomassie Blue.

 Tel: 1-631-559-9269 1-516-512-3133

 Email: info@creative-biomart.com  Fax: 1-631-938-8127

 45-1 Ramsey Road, Shirley, NY 11967, USA