

Recombinant Human CENPW Protein, GST-tagged

Cat. No. CENPW-5253H Lot. No. (See product label)

SPECIFICATION

Product Overview	Human CENPW full-length ORF (NP_001012525.1, 1 a.a. - 88 a.a.) recombinant protein with GST tag at N-terminal.
Species	Human
Source	Wheat Germ
Description	CENPW (Centromere Protein W) is a Protein Coding gene. Among its related pathways are Chromosome Maintenance and Cell Cycle, Mitotic. GO annotations related to this gene include protein heterodimerization activity.
Molecular Mass	36.08 kDa
AA Sequence	MALSTIVSQRKQIKRKAPRGFLKRVFKRKKPQLRLEKSGDLLVHLNCLLFVHRLAEEES RTNACASKCRVINKEHVLAAAKVILKKS RG
Applications	Enzyme-linked Immunoabsorbent Assay Western Blot (Recombinant protein) Antibody Production Protein Array
Notes	Best use within three months from the date of receipt of this protein.
Storage	Store at -80 centigrade. Aliquot to avoid repeated freezing and thawing.

 Tel: 1-631-559-9269 1-516-512-3133

 Email: info@creative-biomart.com  Fax: 1-631-938-8127

 45-1 Ramsey Road, Shirley, NY 11967, USA

Storage Buffer 50 mM Tris-HCl, 10 mM reduced Glutathione, pH=8.0 in the elution buffer.

GENE INFORMATION

Gene Name CENPW centromere protein W [Homo sapiens (human)]

Official Symbol CENPW

Synonyms CENPW; centromere protein W; CUG2; CENP-W; C6orf173; centromere protein W; cancer-up-regulated gene 2 protein; cancer-upregulated gene 2

Gene ID 387103

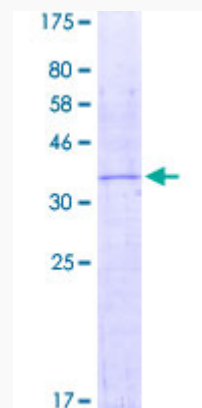
mRNA Refseq NM_001012507

Protein Refseq NP_001012525

MIM 611264

UniProt ID Q5EE01

Quality Control Testing



 Tel: 1-631-559-9269 1-516-512-3133

 Email: info@creative-biomart.com  Fax: 1-631-938-8127

 45-1 Ramsey Road, Shirley, NY 11967, USA



12.5% SDS-PAGE Stained with Coomassie Blue.

 Tel: 1-631-559-9269 1-516-512-3133

 Email: info@creative-biomart.com  Fax: 1-631-938-8127

 45-1 Ramsey Road, Shirley, NY 11967, USA