

Recombinant Human CEP55 Protein, Myc/DDK-tagged, C13 and N15-labeled

Cat. No. CEP55-6520H Lot. No. (See product label)

SPECIFICATION

Product Overview

CEP55 MS Standard C13 and N15-labeled recombinant protein (NP_060601) with a C-terminal MYC/DDK tag, was expressed in HEK293 cells.

Species

Human

Source

HEK293

Description

Plays a role in mitotic exit and cytokinesis. Recruits PDCD6IP and TSG101 to midbody during cytokinesis. Required for successful completion of cytokinesis. Not required for microtubule nucleation. Plays a role in the development of the brain and kidney.

Molecular Mass

54.1 kDa

AA Sequence

MSSRSTKDLIKSKWGSKPSNSKSETTLEKLKGEIAHLKTSVDEITSGKGKLTDKERHR
LLEKIRVLEAEKEKNAYQLTEKDKEIQRLRDQLKARYSTTALLEQLEETTREGERREQ
VLKALSEEKDVLKQQLSAATSRIAELESKTNTLRLSQT VAPNCFNSSINNIHEMEIQLK
DALEKNQQWL VYDQQREVYVKGLLAKIFELEKKTETA AHSLPQQTKKPESEGYLQE
EKQKCYNDLLASAKKDLEVERQTITQLSFELSEFRRYEETQKEVHNLNQLLYSQRR
ADVQHLEDDRHKTEKIQLREENDIARGKLEEEKKRSEELLSQVQFLYTSLLKQQEE
QTRVALLEQQM QACTLDFENEKLD RQH VQHQLLVILKELRKARNQITQLES LKQLHE
FAITEPLVTFQGETENREKVAASPKSPTAALNESLVECPKCNIQYPATEHRDLLVHVE
YCSKTRTRPLEQKLISEEDLAANDILDYKDDDDKV

 Tel: 1-631-559-9269 1-516-512-3133

 Email: info@creative-biomart.com  Fax: 1-631-938-8127

 45-1 Ramsey Road, Shirley, NY 11967, USA

Purity	> 80% as determined by SDS-PAGE and Coomassie blue staining
Stability	Stable for 3 months from receipt of products under proper storage and handling conditions.
Storage	Store at -80 centigrade. Avoid repeated freeze-thaw cycles.
Concentration	50 µg/mL as determined by BCA
Storage Buffer	100 mM glycine, 25 mM Tris-HCl, pH 7.3.

GENE INFORMATION

Gene Name	CEP55 centrosomal protein 55kDa [Homo sapiens (human)]
Official Symbol	CEP55
Synonyms	CEP55; centrosomal protein 55kDa; C10orf3, chromosome 10 open reading frame 3; centrosomal protein of 55 kDa; cancer/testis antigen 111; CT111; FLJ10540; up-regulated in colon cancer 6; URCC6; C10orf3;
Gene ID	55165
mRNA Refseq	NM_018131
Protein Refseq	NP_060601
MIM	610000
UniProt ID	Q53EZ4

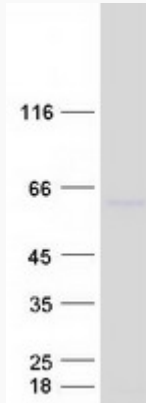
 Tel: 1-631-559-9269 1-516-512-3133

 Email: info@creative-biomart.com  Fax: 1-631-938-8127

 45-1 Ramsey Road, Shirley, NY 11967, USA



SDS-PAGE



Tel: 1-631-559-9269 1-516-512-3133

Email: info@creative-biomart.com Fax: 1-631-938-8127

45-1 Ramsey Road, Shirley, NY 11967, USA