

Recombinant Human CEP70 Protein, GST-Tagged

Cat. No. CEP70-1140H Lot. No. (See product label)

SPECIFICATION

Product Overview	Human CEP70 full-length ORF (AAH30598.1, 1 a.a. - 597 a.a.) recombinant protein with GST-tag at N-terminal.
Species	Human
Source	Wheat Germ
Description	CEP70 (Centrosomal Protein 70) is a Protein Coding gene. Diseases associated with CEP70 include Mandibular Cancer and Jaw Cancer. Among its related pathways are Regulation of PLK1 Activity at G2/M Transition and Organelle biogenesis and maintenance.
Molecular Mass	96.2 kDa
AA Sequence	MFPVAPKPKDSSQPSDRMLTEKQQEEAEWESINVLLMMHGLKPLSLVKRTDLKDLII FDKQSSQRMQRNLKLLVEETSCQQNMIQELIETNQQLRNELQLEQSRAANQEQRAN DLEQIMESVKSIGELEDESLNRACHQQNKIKDLQKEQKTLQVKCQHKKRTEQEE TIASLQMEVCRLKKEEEDRIVTQNRVFAYLCKRVPHTVLDRQLLCLIDYYESKIRKIHT QRQYKEDESQSEEENDYRNLDSPTYKGLLMSLQNLKESKSKIDALSSEKLNQK DLETRPTQHELRLYKQVKKLEKALKKNVQLQELINHKAEDTEKKDEPSKYNQQA LIDQRYFQVLCINSIIHNPRAPVVIYKQTKGGVQNFNKDLVQDCGFEHLVPVIEMWA DQLTSLKDLYKSLKTLAELVPWLNKQDENEGIKVEDLLFIVDTMLEEVENKEKDS NMPHFQTLQAIVSHFQKLFVPSLNGVYPRMNEVYTRLGEMNNAVRNLQELLELDS SSSLCVLVSTVGKLCRLINEDVNEQVMQVLGPEDLQSIYKLEEHEEFFPAFQAFTND

 Tel: 1-631-559-9269 1-516-512-3133

 Email: info@creative-biomart.com  Fax: 1-631-938-8127

 45-1 Ramsey Road, Shirley, NY 11967, USA

LLEILEIDDLDAIVPAVKKLVLSY

Applications

Enzyme-linked Immunoabsorbent Assay
 Western Blot (Recombinant protein)
 Antibody Production
 Protein Array

Storage

Store at -80 centigrade. Aliquot to avoid repeated freezing and thawing.

Storage Buffer

50 mM Tris-HCl, 10 mM reduced Glutathione, pH=8.0 in the elution buffer.

GENE INFORMATION

Gene Name

[CEP70 centrosomal protein 70kDa \[Homo sapiens \]](#)

Official Symbol

[CEP70](#)

Synonyms

CEP70; centrosomal protein 70kDa; centrosomal protein of 70 kDa; BITE; FLJ13036; p10-binding protein;

Gene ID

[80321](#)

mRNA Refseq

[NM_024491](#)

Protein Refseq

[NP_077817](#)

MIM

[614310](#)

UniProt ID

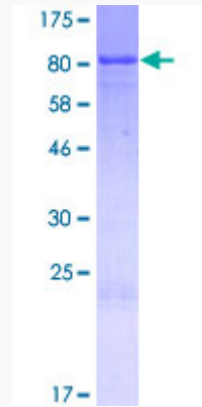
[Q8NHQ1](#)

 Tel: 1-631-559-9269 1-516-512-3133

 Email: info@creative-biomart.com  Fax: 1-631-938-8127

 45-1 Ramsey Road, Shirley, NY 11967, USA

**Quality Control
Testing**



12.5% SDS-PAGE Stained with Coomassie Blue.

 Tel: 1-631-559-9269 1-516-512-3133

 Email: info@creative-biomart.com  Fax: 1-631-938-8127

 45-1 Ramsey Road, Shirley, NY 11967, USA